

## FLIGHT SUMMARY REPORT

**Flight Number:** 98-126  
**Calendar/Julian Date:** 10 September 1998 • 253  
**Sensor Package:** Wild Heerbrugg RC-10  
Airborne Visible and Infrared Imaging  
Spectrometer (AVIRIS)  
**Area(s) Covered:** Colorado

**Investigator(s):** Goetz, University of Colorado

**Aircraft #:** 809

### SENSOR DATA

<b>Accession #:</b>	05299	----
<b>Sensor ID #:</b>	076	099
<b>Sensor Type:</b>	RC-10	AVIRIS
<b>Focal Length:</b>	12" 304.89 mm	----
<b>Film Type:</b>	Aerochrome IR SO-134	----
<b>Filtration:</b>	Wratten 12	----
<b>Spectral Band:</b>	510-900 nm	----
<b>f Stop:</b>	11	----
<b>Shutter Speed:</b>	1/250	----
<b># of Frames:</b>	88	----
<b>% Overlap:</b>	60	----
<b>Quality:</b>	Fair	----
<b>Remarks:</b>	Subtract 53 seconds for correct UTC	

## **Airborne Science and Applications Program**

The Airborne Science Branch at NASA's Dryden Flight Research Center, Edwards, California, operates two ER-2 high altitude aircraft in support of NASA earth science research. The ER-2s are used as readily deployable high altitude sensor platforms to collect remote sensing and in situ data on earth resources, celestial phenomena, atmospheric dynamics, and oceanic processes. Additionally, these aircraft are used for electronic sensor research and development and satellite investigative support.

The ER-2s are flown from various deployment sites in support of scientific research sponsored by NASA and other federal, state, university, and industry investigators. Data are collected from deployment sites in Kansas, Texas, Virginia, Florida, and Alaska. Cooperative international scientific projects have deployed the aircraft to sites in Great Britain, Australia, Chile, Fiji, New Zealand, and Norway.

Photographic and digital imaging sensors are flown aboard the ER-2s in support of research objectives defined by the sponsoring investigators. High resolution mapping cameras and digital multispectral imaging sensors are utilized in a variety of configurations in the ER-2s' four pressurized experiment compartments. The following provides a description of the digital multispectral sensor(s) and camera(s) used for data collection during this flight.

## **Airborne Visible and Infrared Imaging Spectrometer**

The Airborne Visible and Infrared Imaging Spectrometer (AVIRIS) is the second in the series of imaging spectrometer instruments developed at the Jet Propulsion Laboratory (JPL) for earth remote sensing. This instrument uses scanning optics and four spectrometers to image a 614 pixel swath simultaneously in 224 contiguous spectral bands (0.4-2.4  $\mu\text{m}$ ).

AVIRIS parameters are as follows:

IFOV:	1 mrad
Ground Resolution:	66 feet (20 meters) at 65,000 feet
Total Scan Angle:	30°
Swath Width:	5.7 nmi (10.6 km) at 65,000 feet
Spectral Coverage:	0.41-2.45 $\mu\text{m}$
Pixels/Scan Line:	614
Number of Spectral Bands:	224
Digitization:	10-bits
Data Rate:	17 MBPS

<u>Spectrometer</u>	<u>Wavelength Range</u>	<u>Number of Bands</u>	<u>Sampling Interval</u>
1	0.41 - 0.70 $\mu\text{m}$	31	9.4 nm
2	0.68 - 1.27 $\mu\text{m}$	63	9.4 nm
3	1.25 - 1.86 $\mu\text{m}$	63	9.7 nm
4	1.84 - 2.45 $\mu\text{m}$	63	9.7 nm

All AVIRIS data is decommutated and archived at JPL and not currently available for public distribution. For further information contact Rob Green at Jet Propulsion Laboratory, 4800 Oak Grove Drive, Mail Stop 183-501, Pasadena, California 91109-8099.

## **Camera Systems**

Various camera systems and films are used for photographic data collection. Film types include high definition color infrared, natural color, and black and white emulsions. Available photographic systems are as follows:

- Wild-Heerbrugg RC-10 metric mapping camera
  - 9 x 9 inch film format
  - 6 inch focal length lens provides area coverage of 16 x 16 nautical miles from 65,000 feet
  - 12 inch focal length lens provides area coverage of 8 x 8 nautical miles from 65,000 feet
  
- Hycon HR-732 large scale mapping camera
  - 9 x 18 inch film format
  - 24 inch focal length lens provides area coverage of 4 x 8 nautical miles from 65,000 feet
  
- IRIS II Panoramic camera
  - 4.5 x 34.7 inch film format
  - 24 inch focal length lens
  - 90 degree field of view provides area coverage of 2 x 21.4 nautical miles from 65,000 feet

## **Data Availability**

The U.S. Geological Survey's EROS Data Center at Sioux Falls, South Dakota serves as the archive and product distribution facility for Airborne Science Program aircraft acquired photographic and digital imagery. The photographic archive consists of photography acquired by the program from 1971 to April 1996. For information regarding photography and digital data (including areas of coverage, products, and product costs) contact EROS Data Center, Customer Services, Sioux Falls, South Dakota 57198 (Telephone: 605-594-6151).

As of April 1996 the EROS Data Center no longer receives an archive copy of newly acquired Airborne Science Program photography. Original photography is archived with the Airborne Sensor Facility at Ames Research Center. A user copy of the photography is provided to the principal investigators for each flight. Principal investigators are cited on the first page of their respective flight summary reports. For information regarding photography acquired from April 1996 to the present contact the Airborne Sensor Facility as follows:

## **Flight Documentation and Data Archive Searches**

The following is the web site for flight documentation as published by the Airborne Sensor Facility at NASA Ames Research Center:

<http://asapdata.arc.nasa.gov/er-2fsr.html>

Additional information regarding flight documentation to include data archive searches, data availability, sensor parameters, and areas of coverage may be obtained from the following:

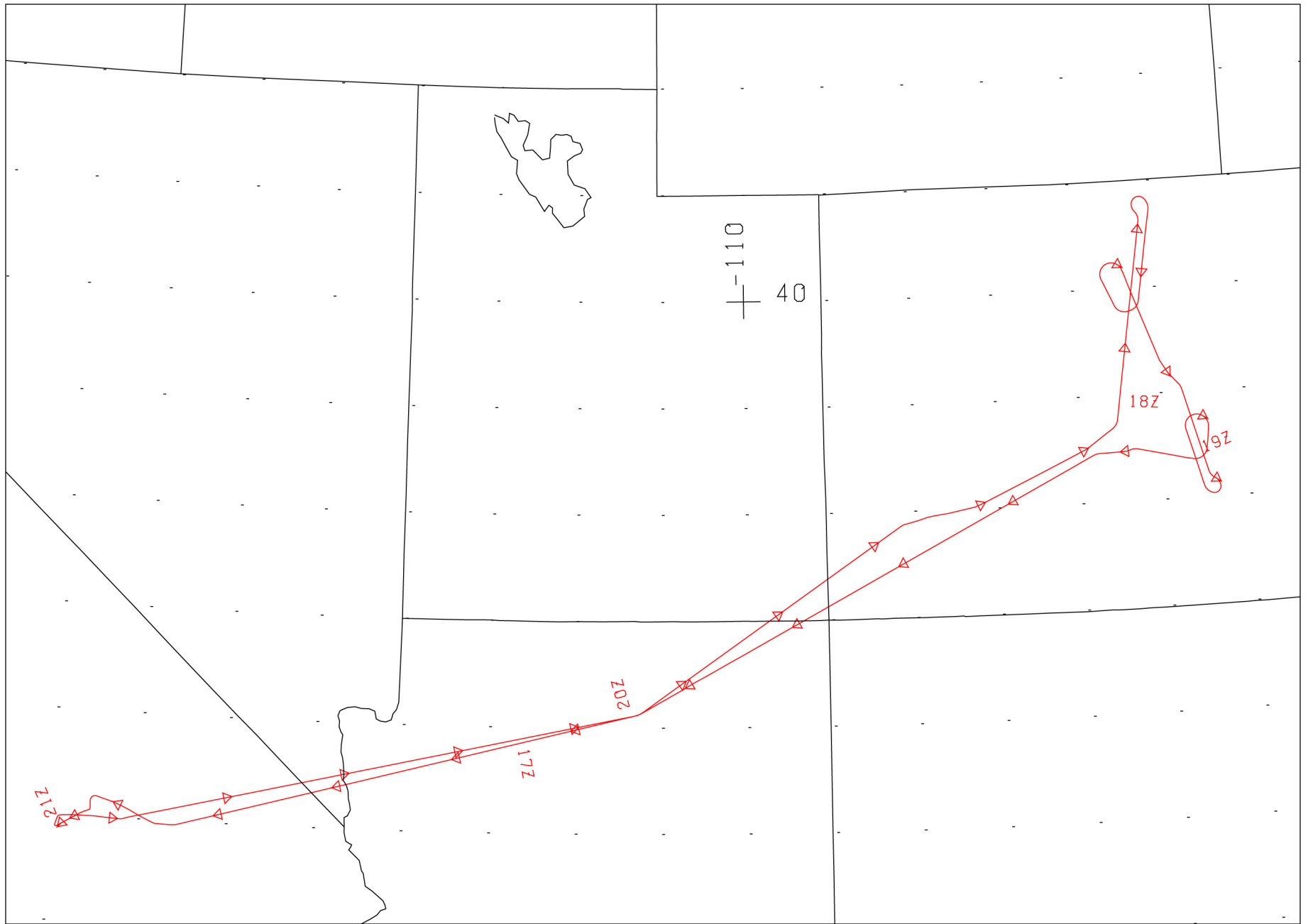
Airborne Sensor Facility  
MS 240-6  
NASA Ames Research Center  
Moffett Field, CA 94035-1000  
Telephone: (650)604-6252 (FAX 4987)

**CAMERA FLIGHT LINE DATA**  
**FLIGHT NO. 98-126**

Accession # 05299

Sensor # 076

Check Points	Frame Numbers	Time (GMT-hr, min, sec)		Altitude, MSL feet/meters	Cloud Cover/Remarks
		START	END		
A - B	9499-9500	16:52:40	16:53:09	66000/20117	40-50% cumulus
C - D	9501-9520	18:07:37	18:16:03	68590/20906	10-30% cumulus (frames 9501-9510)
E - F	9521-9536	18:21:05	18:27:40	68150/20772	Clear
G - H	9537-9552	18:36:17	18:42:50	68181/20782	Minor-50% cumulus; oblique (frame 9537)
I - J	9553-9564	18:49:29	18:54:12	68900/21001	10% cumulus (frames 9556-9557); minor cumulus (frames 9560-9561)
K - L	9565-9575	18:58:32	19:02:47	68491/20876	10% cloud shadow (frames 9565-9568); minor-10% cumulus (frames 9571-9574); static discharge (frame 9575)
M - N	9576-9586	19:10:05	19:14:19	68455/20865	10-40% cumulus

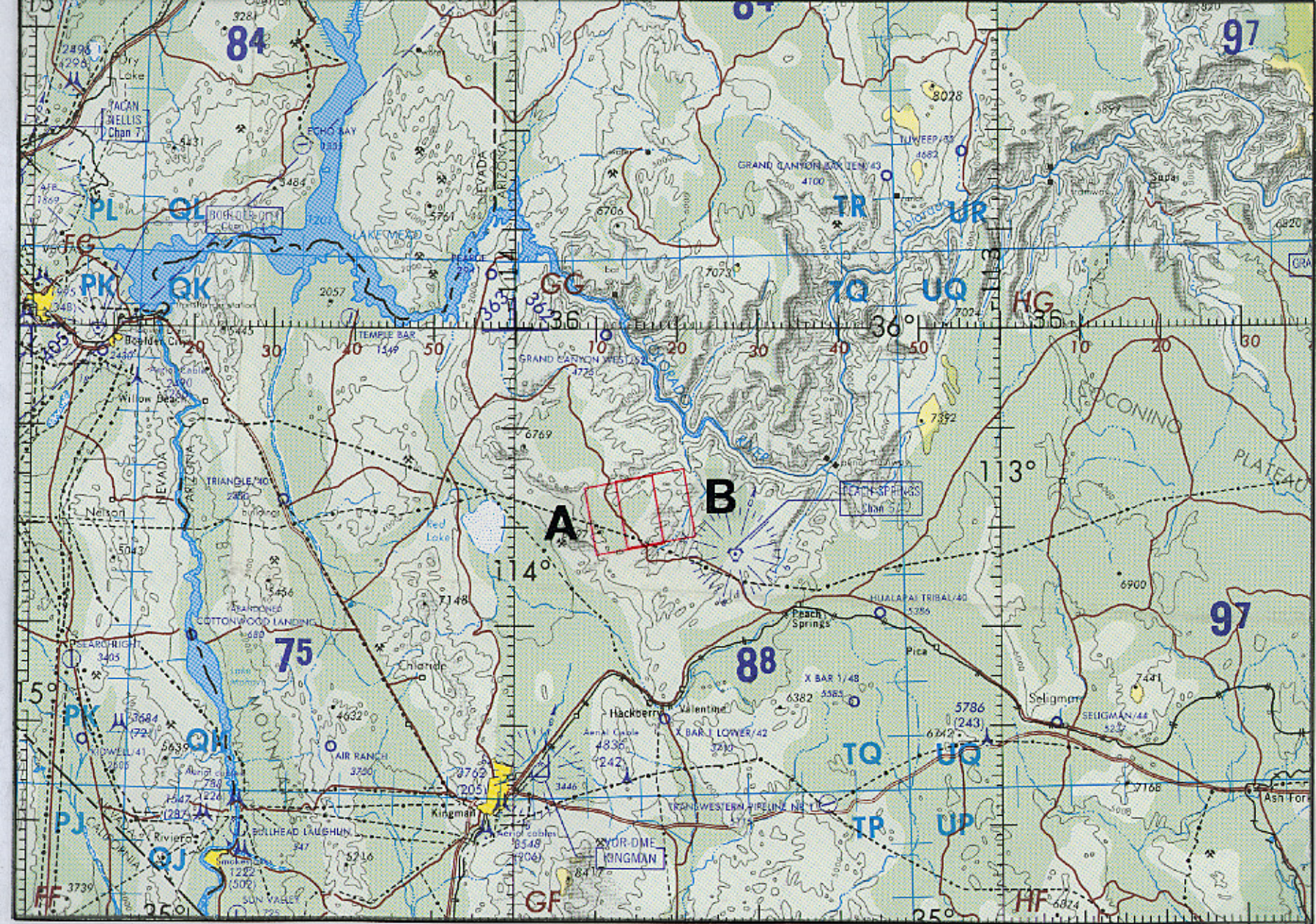


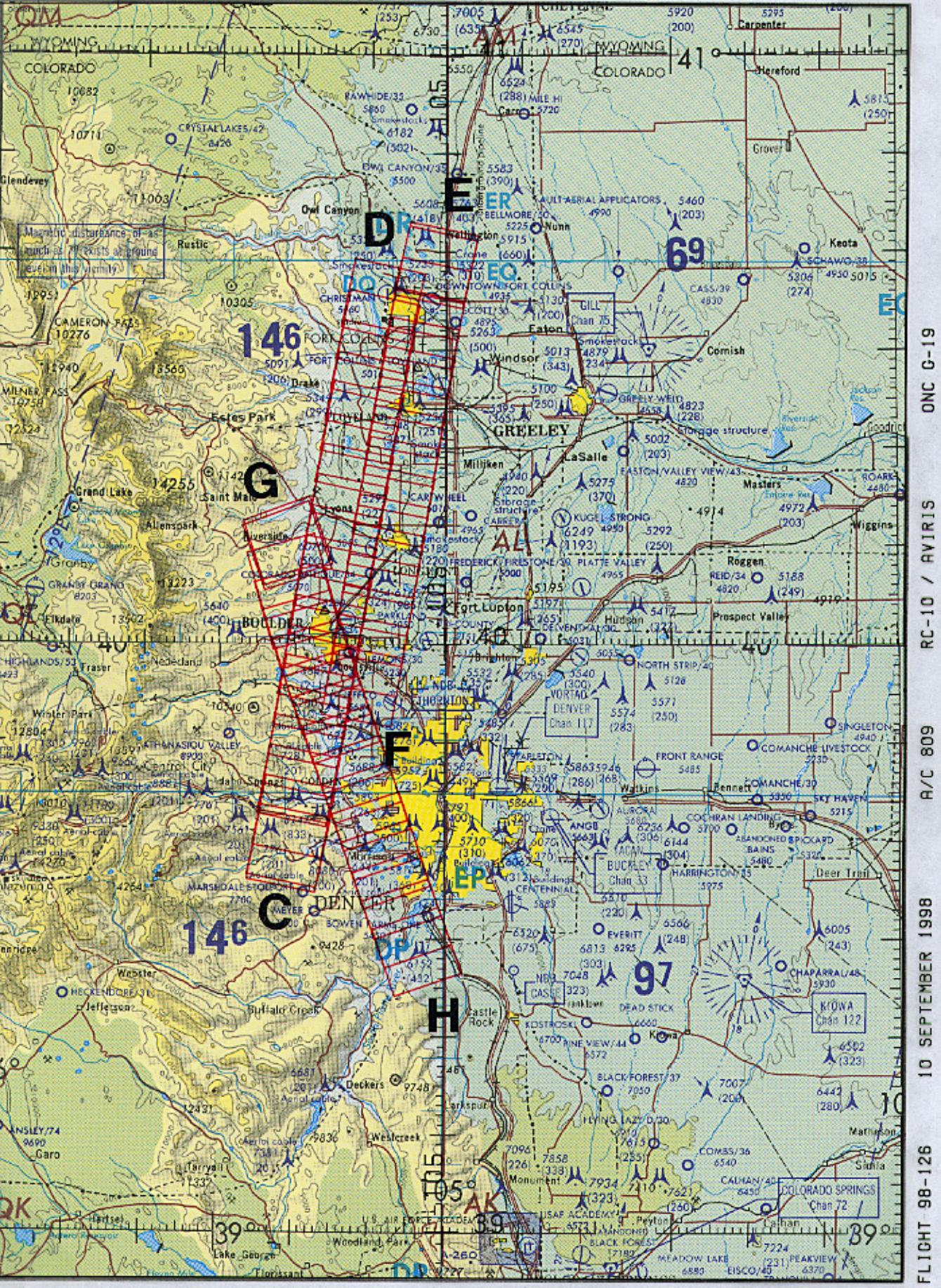
FLIGHT 98-126

10 SEPTEMBER 1998

A/C 809

RC-10 / AVIRIS





Magnetic disturbance of as much as 10 exists above ground level in this vicinity.

146

146

G

146

C

D

F

H

69

97

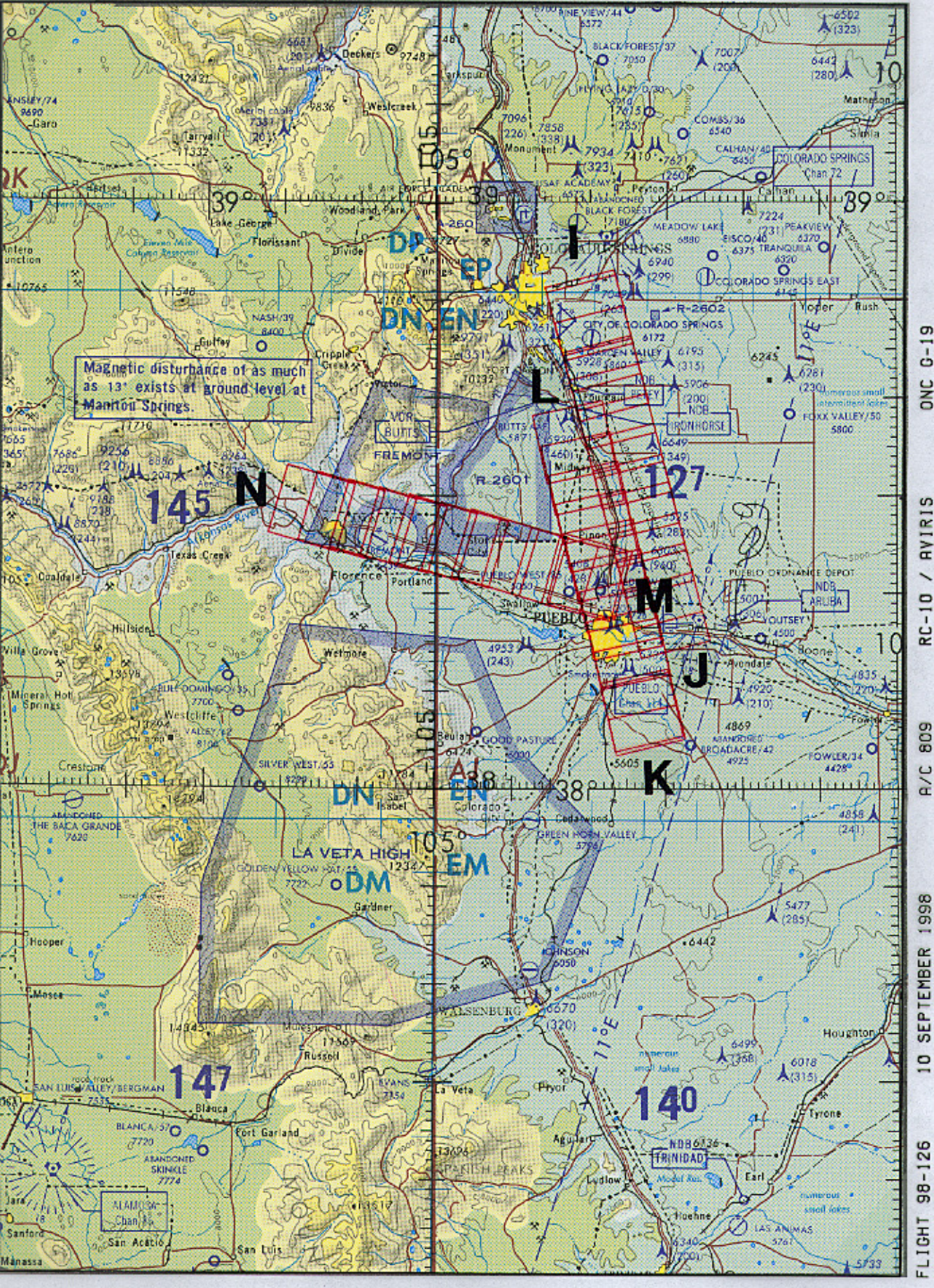
ONC G-19

RC-10 / AVIRIS

R/C 809

10 SEPTEMBER 1998

FLIGHT 98-126



Magnetic disturbance of as much as 13' exists at ground level at Maniton Springs.

145 N

127

147

140

ALAMOSA  
Chan 72

ONC G-19

RC-10 / RVIRIS

R/C 809

10 SEPTEMBER 1998

FLIGHT 98-126