

FLIGHT SUMMARY REPORT

Flight Number: 96-115
Calendar/Julian Date: 10 May 1996 • 131
Sensor Package: Wild-Heerbrugg RC-10
Modis Airborne Simulator (MAS)
Radiation Measurement System (RAMS)
Cloud Lidar System (CLS)
Millimeter-Wave Imaging Radiometer (MIR)
Area(s) Covered: Ferry -- Salina, KS to Moffett Field, CA
Investigator(s): Toon, NASA-ARC **Aircraft #:** 709
Moeller, U. of Wisconsin

SENSOR DATA

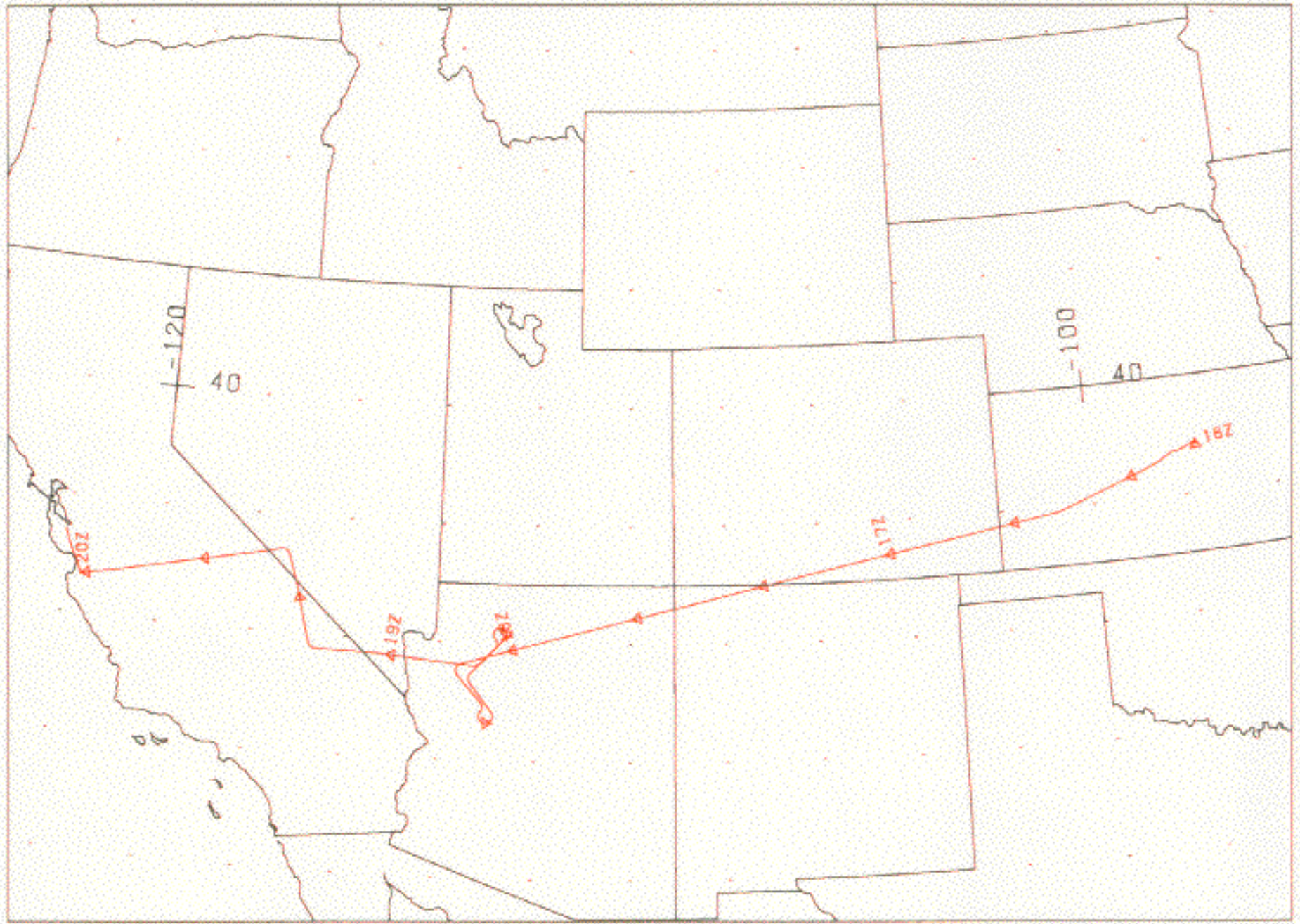
Accession #: 05079
Sensor ID #: 035
Sensor Type: RC-10
Focal Length: 6"
153.46 mm
Film Type: Panatomic X
Aerographic II, 2412
Filtration: Wratten 12 + 2.2 AV
Spectral Band: 510-700 nm
f Stop: 8
Shutter Speed: 1/200
of Frames: 38
% Overlap: 60
Quality: Excellent
Remarks: Camera clock offset
54.7 seconds from nav data

CAMERA FLIGHT LINE DATA
FLIGHT NO. 96-115

Accession # 05079

Sensor # 035

Check Points	Frame Numbers	Time (GMT-hr, min, sec)		Altitude, MSL feet/meters	Cloud Cover/Remarks
		START	END		
A - B	1206-1212	18:12:23	18:17:20	65871/20077	Clear; oblique (frame 1212)
C - D	1213-1219	18:23:34	18:28:32	65000/19812	Clear
D - E	1220-1226	18:30:38	18:35:36	65814/20060	Clear
E - D	1227-1233	18:42:02	18:46:59	66243/20191	Clear
F - G	1234-1243	19:14:16	19:22:08	67300/20513	Clear

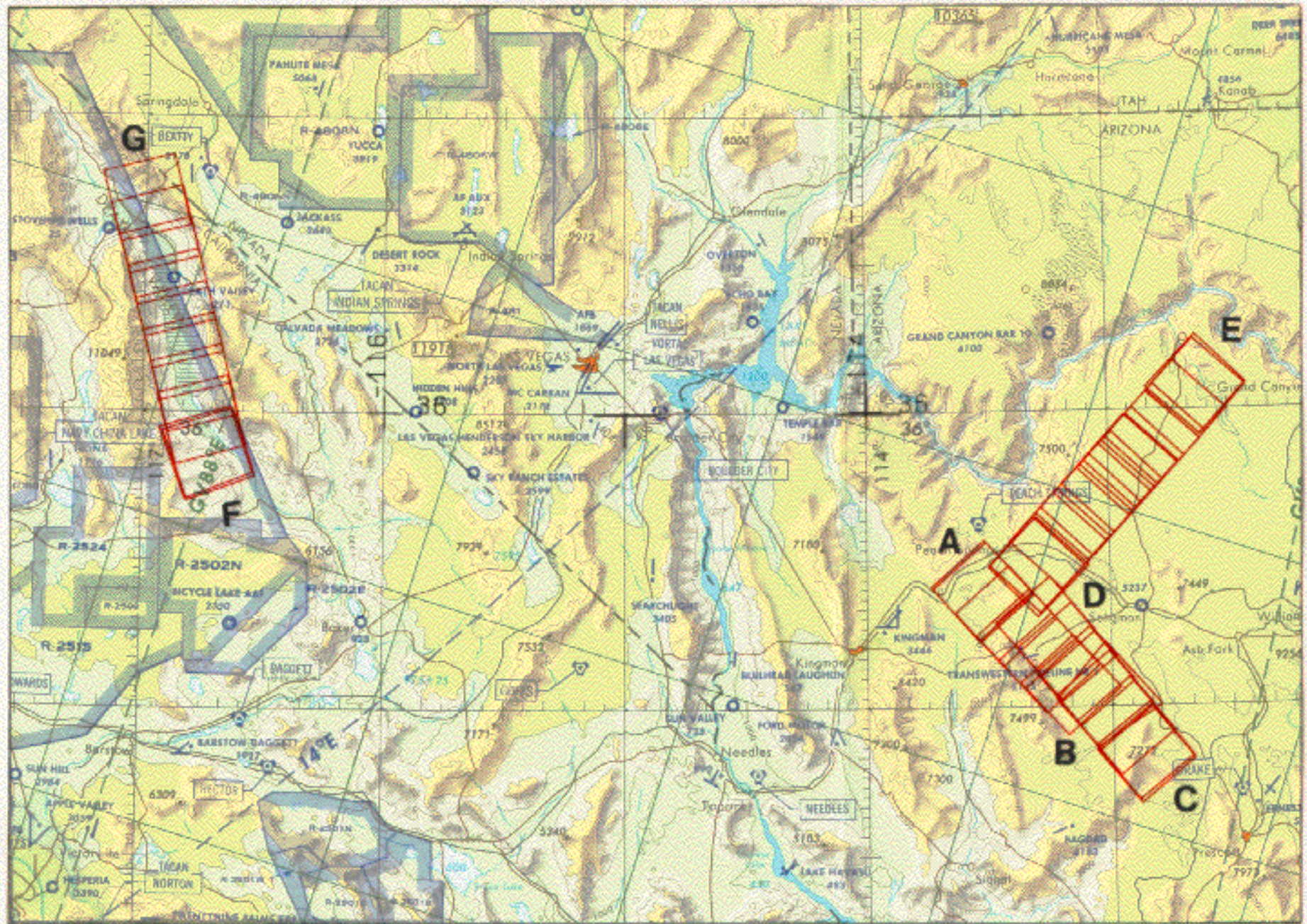


FLIGHT 96-115

10 MAY 1996

A/C 709

RC-10 / MAS-50 / RAMS / MIR / CLS



FLIGHT 96-115

10 MAY 1996

A/C 709

RC-10

JNC 43