

FLIGHT SUMMARY REPORT

Flight Number: 96-090
Calendar/Julian Date: 03 April 1996 • 094
Sensor Package: Wild-Heerbrugg RC-10
Airborne Visible and Infrared Imaging
Spectrometer (AVIRIS)
Area(s) Covered: Southern California

Investigator(s): Dozier, UCSB;
Kruse Analytical Imaging & Physics

Aircraft #: 706

SENSOR DATA

Accession #:	05056	-----
Sensor ID #:	026	099
Sensor Type:	RC-10	AVIRIS
Focal Length:	12" 304.97 mm	-----
Film Type:	Aerochrome IR SO-060	-----
Filtration:	Wratten 12	-----
Spectral Band:	510-900 nm	-----
f Stop:	11	-----
Shutter Speed:	1/275	-----
# of Frames:	127	-----
% Overlap:	60	-----
Quality:	Excellent	-----
Remarks:		

FLIGHT SUMMARY REPORT

Flight Number: 96-090
Calendar/Julian Date: 03 April 1996 • 094
Sensor Package: Wild-Heerbrugg RC-10
Airborne Visible and Infrared Imaging
Spectrometer (AVIRIS)
Area(s) Covered: Southern California

Investigator(s): Dozier, UCSB; Kruse Analytical
Kruse Analytical Imaging & Physics

Aircraft #: 706

SENSOR DATA

Accession #:	05056	-----
Sensor ID #:	026	099
Sensor Type:	RC-10	AVIRIS
Focal Length:	12" 304.97 mm	-----
Film Type:	Aerochrome IR SO-060	-----
Filtration:	Wratten 12	-----
Spectral Band:	510-900 nm	-----
f Stop:	11	-----
Shutter Speed:	1/275	-----
# of Frames:	127	-----
% Overlap:	60	-----
Quality:	Excellent	-----
Remarks:		

Airborne Science and Applications Program

The Airborne Science and Applications Program (ASAP) is supported by three ER-2 high altitude Earth Resources Survey aircraft. These aircraft are operated by the High Altitude Missions Branch at NASA-Ames Research Center, Moffett Field, California. The ER-2s are used as readily deployable high altitude sensor platforms to collect remote sensing and *in situ* data on earth resources, celestial phenomena, atmospheric dynamics, and oceanic processes. Additionally, these aircraft are used for electronic sensor research and development and satellite investigative support.

The ER-2s are flown from various deployment sites in support of scientific research sponsored by NASA and other federal, state, university, and industry investigators. Data are collected from deployment sites in Kansas, Texas, Virginia, Florida, and Alaska. Cooperative international scientific projects have deployed the aircraft to sites in Great Britain, Australia, Chile, and Norway

Photographic and digital imaging sensors are flown aboard the ER-2s in support of research objectives defined by the sponsoring investigators. High resolution mapping cameras and digital multispectral imaging sensors are utilized in a variety of configurations in the ER-2s' four pressurized experiment compartments. The following provides a description of the digital multispectral sensor(s) and camera(s) used for data collection during this flight.

Airborne Visible and Infrared Imaging Spectrometer

The Airborne Visible and Infrared Imaging Spectrometer (AVIRIS) is the second in the series of imaging spectrometer instruments developed at the Jet Propulsion Laboratory (JPL) for earth remote sensing. This instrument uses scanning optics and four spectrometers to image a 614 pixel swath simultaneously in 224 contiguous spectral bands (0.4-2.4 μm).

AVIRIS parameters are as follows:

IFOV:	1 mrad
Ground Resolution:	66 feet (20 meters) at 65,000 feet
Total Scan Angle:	30°
Swath Width:	5.7 nm (10.6 km) at 65,000 feet
Spectral Coverage:	0.41-2.45 μm
Pixels/Scan Line:	614
Number of Spectral Bands:	224
Digitization:	10-bits
Data Rate:	17 MBPS

<u>Spectrometer</u>	<u>Wavelength Range</u>	<u>Number of Bands</u>	<u>Sampling Interval</u>
1	0.41 - 0.70 μm	31	9.4 nm
2	0.68 - 1.27 μm	63	9.4 nm
3	1.25 - 1.86 μm	63	9.7 nm
4	1.84 - 2.45 μm	63	9.7 nm

All AVIRIS data is decommutated and archived at JPL and not currently available for public distribution. For further information contact Rob Green at Jet Propulsion Laboratory, 4800 Oak Grove Drive, Mail Stop 183-501, Pasadena, California 91109-8099.

Camera Systems

Various camera systems and films are used for photographic data collection. Film types include high definition color infrared, natural color, and black and white emulsions. Available photographic systems are as follows:

- Wild-Heerbrugg RC-10 metric mapping camera
 - 9 x 9 inch film format
 - 6 inch focal length lens provides area coverage of 16 x 16 nautical miles from 65,000 feet
 - 12 inch focal length lens provides area coverage of 8 x 8 nautical miles from 65,000 feet
- Hycon HR-732 large scale mapping camera
 - 9 x 18 inch film format
 - 24 inch focal length lens provides area coverage of 4 x 8 nautical miles from 65,000 feet
- IRIS II Panoramic camera
 - 4.5 x 34.7 inch film format
 - 24 inch focal length lens
 - 90 degree field of view provides area coverage of 2 x 21.4 nautical miles from 65,000 feet

The U.S. Geological Survey's EROS Data Center at Sioux Falls, South Dakota serves as the archive and product distribution facility for NASA-Ames aircraft acquired photographic and digital imagery. For information regarding photography and digital data (including areas of coverage, products, and product costs) contact EROS Data Center, Customer Services, Sioux Falls, South Dakota 57198 (Telephone: 605-594-6151).

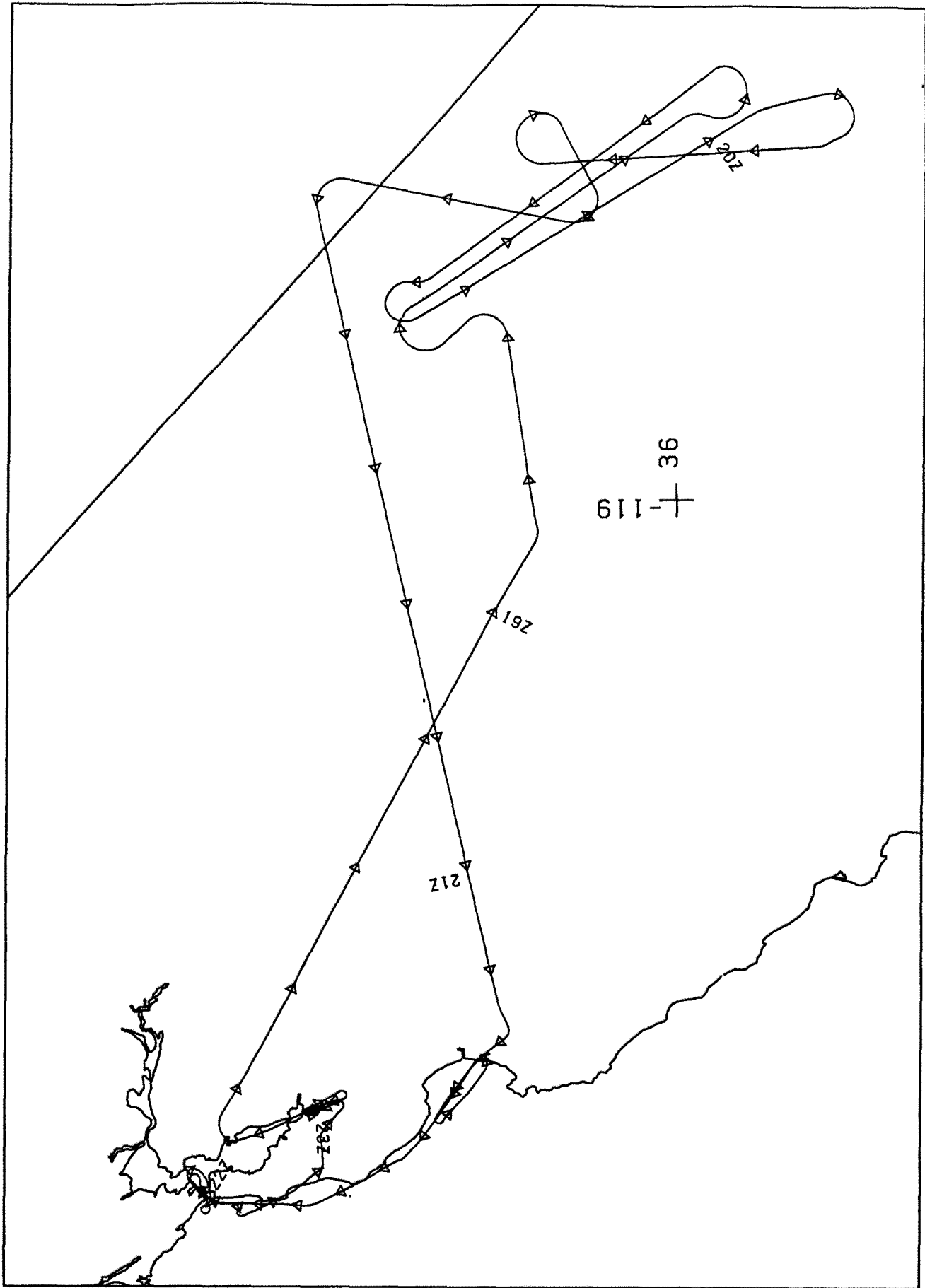
Additional information regarding ER-2 acquired photographic and digital data is available through the Aircraft Data Facility at Ames Research Center. For specific information regarding flight documentation, sensor parameters, and areas of coverage contact the Aircraft Data Facility, NASA-Ames Research Center, Mail Stop 240-6, Moffett Field, California 94035-1000 (Telephone: 415-604-6252).

**CAMERA FLIGHT LINE DATA
FLIGHT NO. 96-090**

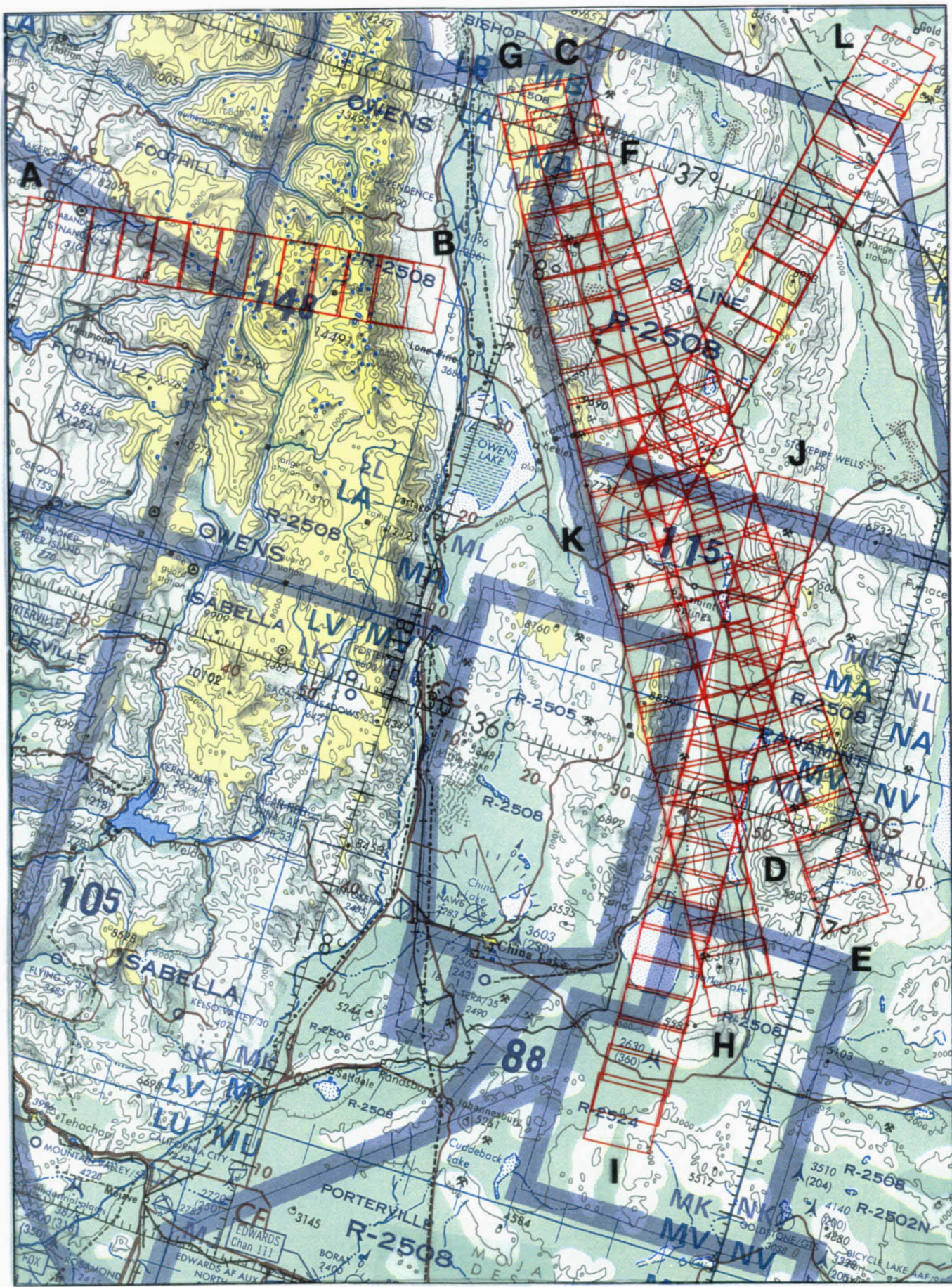
Accession # 05056

Sensor # 026

Check Points	Frame Numbers	Time (GMT-hr, min, sec)		Altitude, MSL feet/meters	Cloud Cover/Remarks
		START	END		
A - B	5376-5387	19 04 50	19 10 04	64283/19593	60-90% cumulus (frames 5376-5380), 10-30% cumulus (frames 5381-5387)
C - D	5388-5411	19 16 18	19 27 14	64475/19652	70% cumulus (frames 5388-5389), 10-30% cumulus (frames 5390-5391), 10% cumulus (frames 5393-5395 and 5398-5401), 10-20% cumulus (frames 5407-5411)
E - F	5412-5435	19 33 10	19 44 04	65008/19814	10-30% cumulus (frames 5412-5418 and 5426-5428), 10% cirrus (frame 5435)
G - H	5436-5464	19 48 23	20 01 37	65100/19842	20-50% cumulus (frames 5436-5439), minor-10% cumulus (frames 5440-5441), 10-30% cumulus (frames 5446-5449 and 5452-5456), 20% cirrus (frames 5457-5458 and 5462-5463)
I - J	5465-5485	20 08 03	20 17 28	65005/19814	10% cumulus (frames 5465 and 5483-5485), 10-30% cirrus (frames 5474-5477)
K - L	5486-5502	20 25 54	20 33 26	64571/19681	10-30% cumulus (frames 5486-5497 and 5500-5502)



FLIGHT 96-090 3 APRIL 1996 A/C 706 RC-10 / AVIRIS



FLIGHT 96-090 3 APRIL 1996 A/C 706 RC-10 / AVIRIS ONC G-18