

FLIGHT SUMMARY REPORT

Flight Number: 94-120
Calendar/Julian Date: 21 July 1994 • 202
Sensor Package: Wild-Heerbrug RC-10
Airborne Visible and Infrared Imaging
Spectrometer (AVIRIS)
Airborne Ocean Color Imager (AOCI)
Area(s) Covered: Canada

Investigator(s): Sellers, GSFC

Aircraft #: 708

SENSOR DATA

Accession #:	04770	----	----
Sensor ID #:	076	099	090
Sensor Type:	RC-10	AVIRIS	AOCI
Focal Length:	12" 304.89 mm	----	----
Film Type:	Aerochrome IR SO-060	----	----
Filtration:	Wratten 12	----	----
Spectral Band:	510-900 nm	----	----
f Stop:	11	----	----
Shutter Speed:	1/200	----	----
# of Frames:	185	----	----
% Overlap:	60	----	----
Quality:	Excellent	----	----
Remarks:	Camera clock offset 4.5 seconds from navigation data		

Airborne Science and Applications Program

The Airborne Science and Applications Program (ASAP) is supported by three ER-2 high altitude Earth Resources Survey aircraft. These aircraft are operated by the High Altitude Missions Branch at NASA-Ames Research Center, Moffett Field, California. The ER-2s are used as readily deployable high altitude sensor platforms to collect remote sensing and *in situ* data on earth resources, celestial phenomena, atmospheric dynamics, and oceanic processes. Additionally, these aircraft are used for electronic sensor research and development and satellite investigative support.

The ER-2s are flown from various deployment sites in support of scientific research sponsored by NASA and other federal, state, university, and industry investigators. Data are collected from deployment sites in Kansas, Texas, Virginia, Florida, and Alaska. Cooperative international scientific projects have deployed the aircraft to sites in Great Britain, Australia, Chile, and Norway.

Photographic and digital imaging sensors are flown aboard the ER-2s in support of research objectives defined by the sponsoring investigators. High resolution mapping cameras and digital multispectral imaging sensors are utilized in a variety of configurations in the ER-2s' four pressurized experiment compartments. The following provides a description of the digital multispectral sensor(s) and camera(s) used for data collection during this flight.

Airborne Visible and Infrared Imaging Spectrometer

The Airborne Visible and Infrared Imaging Spectrometer (AVIRIS) is the second in the series of imaging spectrometer instruments developed at the Jet Propulsion Laboratory (JPL) for earth remote sensing. This instrument uses scanning optics and four spectrometers to image a 614 pixel swath simultaneously in 224 contiguous spectral bands (0.4-2.4 μm).

AVIRIS parameters are as follows:

IFOV:	1 mrad
Ground Resolution:	66 feet (20 meters) at 65,000 feet
Total Scan Angle:	30°
Swath Width:	5.7 nmi (10.6 km) at 65,000 feet
Spectral Coverage:	0.41-2.45 μm
Pixels/Scan Line:	614
Number of Spectral Bands:	224
Digitization:	10-bits
Data Rate:	17 MBPS

<u>Spectrometer</u>	<u>Wavelength Range</u>	<u>Number of Bands</u>	<u>Sampling Interval</u>
1	0.41 - 0.70 μm	31	9.4 nm
2	0.68 - 1.27 μm	63	9.4 nm
3	1.25 - 1.86 μm	63	9.7 nm
4	1.84 - 2.45 μm	63	9.7 nm

All AVIRIS data is decommutated and archived at JPL and not currently available for public distribution. For further information contact Rob Green at Jet Propulsion Laboratory, 4800 Oak Grove Drive, Mail Stop 183-501, Pasadena, California 91109-8099.

Airborne Ocean Color Imager

The Airborne Ocean Color Imager (AOCI) is a high altitude multispectral scanner designed for oceanographic remote sensing. It provides 10-bit digitization of eight bands in the visible/near-infrared region of the spectrum, plus two 8-bit bands in the near and thermal infrared. The bandwidths are as follows:

<u>Channel</u>	<u>Wavelength, μm</u>
1	0.436 - 0.455
2	0.481 - 0.501
3	0.511 - 0.531
4	0.554 - 0.575
5	0.610 - 0.631
6	0.655 - 0.676
7	0.741 - 0.800
8	0.831 - 0.897
9	0.989 - 1.054
10	8.423 - 12.279

Sensor/aircraft parameters are as follows:

IFOV:	2.5 mrad
Ground Resolution:	163 feet (50 meters) at 65,000 feet
Total Scan Angle:	85°
Swath Width:	19.6 nmi (36.3 km) at 65,000 feet
Pixels/Scan Line:	716
Scan Rate:	6.25 scans/second
Ground Speed:	400 kts (206 m/second)
Digitization:	8-bit channels 9-10 10-bit channels 1-8

Camera Systems

Various camera systems and films are used for photographic data collection. Film types include high definition color infrared, natural color, and black and white emulsions. Available photographic systems are as follows:

- Wild-Heerbrug RC-10 metric mapping camera
 - 9 x 9 inch film format
 - 6 inch focal length lens provides area coverage of 16 x 16 nautical miles from 65,000 feet
 - 12 inch focal length lens provides area coverage of 8 x 8 nautical miles from 65,000 feet
- Hycon HR-732 large scale mapping camera
 - 9 x 18 inch film format
 - 24 inch focal length lens provides area coverage of 4 x 8 nautical miles from 65,000 feet
- IRIS II Panoramic camera
 - 4.5 x 34.7 inch film format
 - 24 inch focal length lens

- 90 degree field of view provides area coverage of 2 x 21.4 nautical miles from 65,000 feet

The U.S. Geological Survey's EROS Data Center at Sioux Falls, South Dakota serves as the archive and product distribution facility for NASA-Ames aircraft acquired photographic and digital imagery. For information regarding photography and digital data (including areas of coverage, products, and product costs) contact EROS Data Center, Customer Services, Sioux Falls, South Dakota 57198 (Telephone: 605-594-6151).

For specific information regarding flight documentation, sensor parameters, and areas of coverage contact the Aircraft Data Facility, NASA-Ames Research Center, Mail Stop 240-6, Moffett Field, California 94035-1000 (Telephone: 415-604-6252). Additional information regarding ER-2 acquired photographic and digital data is also available through the Aircraft Data Facility.

**CAMERA FLIGHT LINE DATA
FLIGHT NO. 94-120**

Accession # 04770

Sensor # 076

Check Points	Frame Numbers	Time (GMT-hr, min, sec)		Altitude, MSL feet/meters	Cloud Cover/Remarks
		START	END		
A - B	4943-4949	16:28:33	16:31:20	65000/19800	Clear
C - D	4950-4954	16:37:01	16:38:53	"	Clear
E - F	4955-4965	16:43:06	16:47:44	"	Clear
F - E	4966-4977	16:53:27	16:58:33	"	Minor cumulus (frames 4966-4967)
G - C	4978-4989	17:04:59	17:10:05	"	Clear
H - I	4990-5003	17:14:45	17:20:47	"	Minor cumulus (frames 4994-4996; 5000-5002)
J - K	5004-5015	17:25:02	17:30:08	"	Minor cumulus (frames 5011-5015)
L - M	5016-5028	17:34:57	17:40:32	"	Minor cumulus (frames 5020-5022; 5026-5028)
N - O	5029-5040	17:45:48	17:50:54	"	Minor cumulus (frames 5033-5034; 5038-5039)

**CAMERA FLIGHT LINE DATA
FLIGHT NO. 94-120**

Accession # 04770

Sensor # 076

Check Points	Frame Numbers	Time (GMT-hr, min, sec)		Altitude, MSL feet/meters	Cloud Cover/Remarks
		START	END		
P - Q	5041-5054	17:55:28	18:01:30	65000/19800	Clear
R - S	5055-5066	18:07:12	18:12:18	"	Clear
T - U	5067-5074	18:18:41	18:21:55	"	Clear
V - S	5075-5091	18:28:12	18:35:36	"	Clear
W - X	5092-5109	18:40:04	18:47:57	"	Minor cumulus (frames 5096-5098)
Y - Z	5110-5127	18:55:49	19:03:41	"	Clear

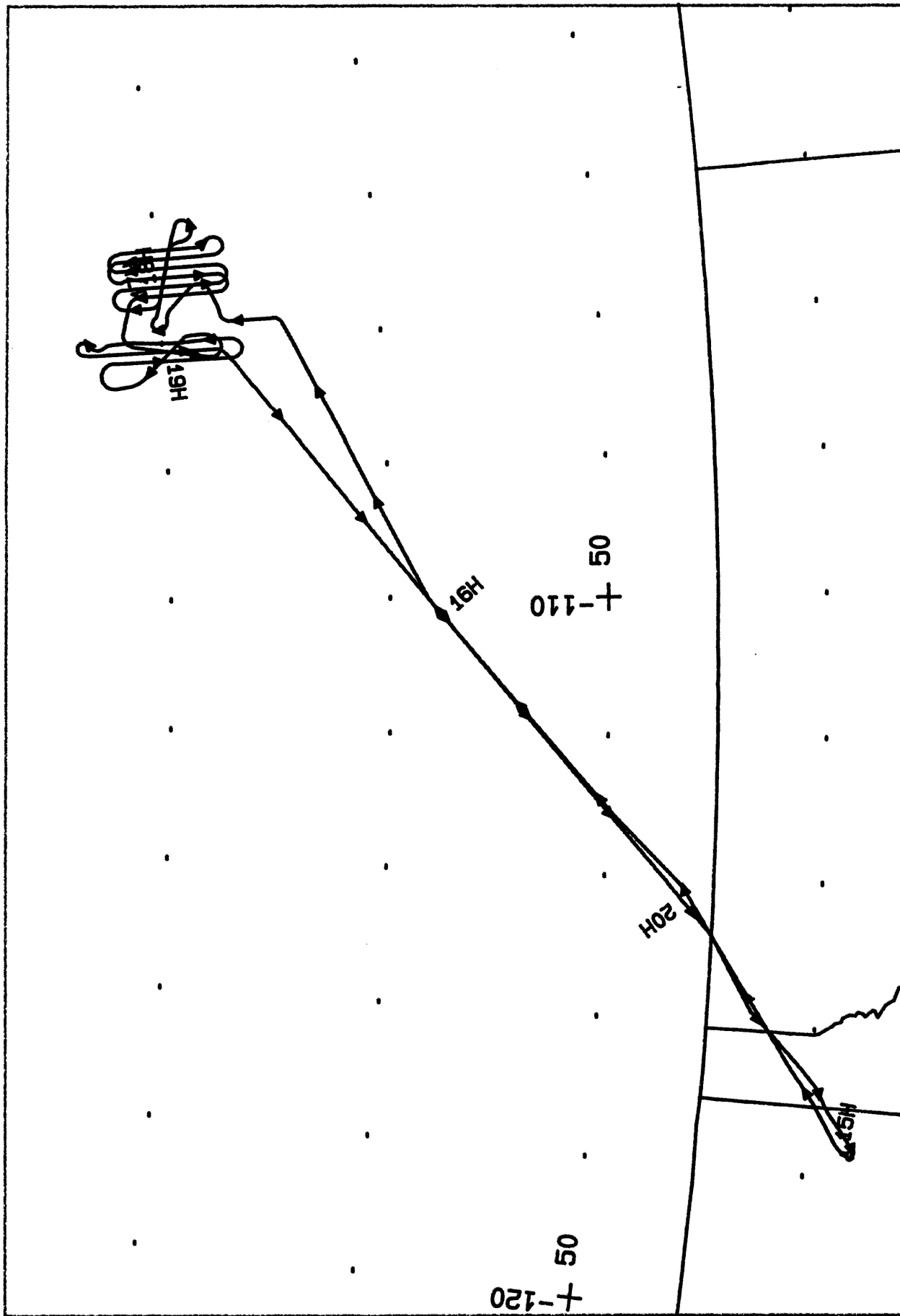
AOCI SCANNER FLIGHT LINE DATA

FLIGHT NO. 94-120

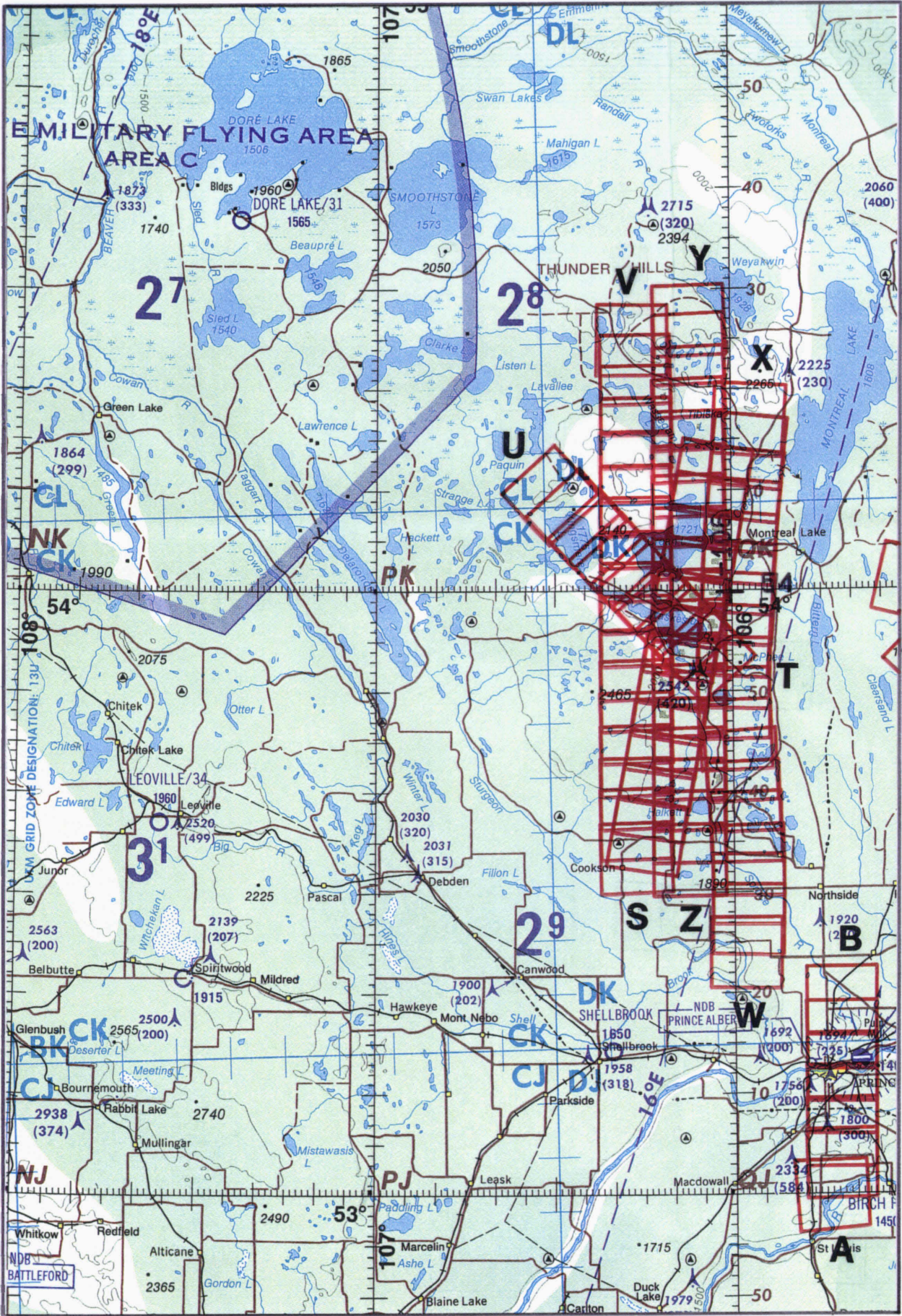
WAEDELIUS FLIGHT DATA

FLIGHT NUMBER: 94-120

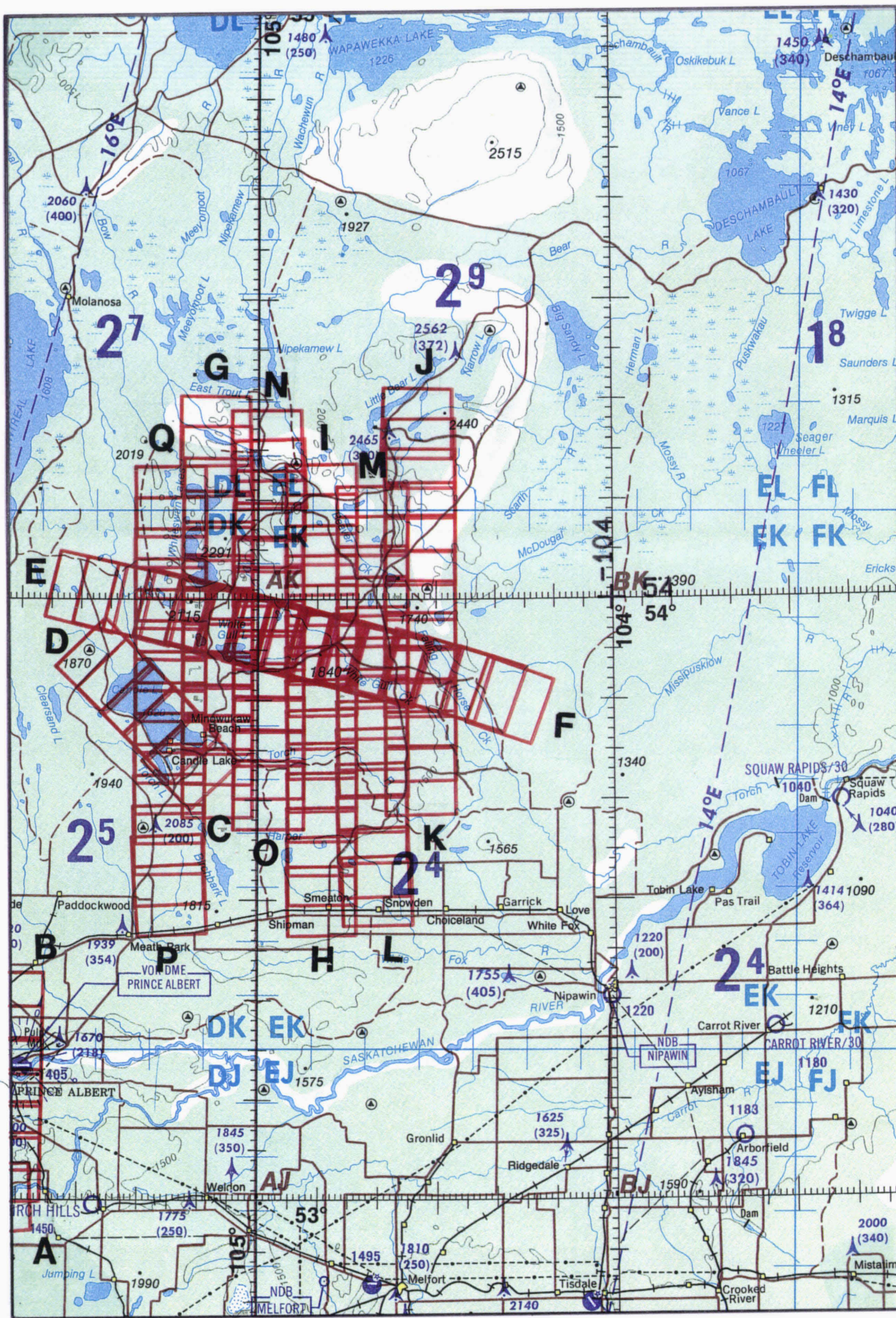
Check Points	A c t u a l T i m e (GMT)	A c t u a l s c a n l i n e b e g i n e n d	A l t i t u d e f e e t / m e t e r	S c a n s p e e d (f p s)	t o t a l C o u n t s c a n l i n e s	t o t a l I n t e r p o l a t e d s c a n l i n e s	t o t a l R e p e a t e d s c a n l i n e s
A-B	16:28:33.0	16:51:23.0	65000/19812	6.25	1054	0	0
C-D	16:37:11.0	16:38:53.0	65000/19812	6.25	694	0	0
E-F	16:43:10.0	16:47:33.0	65000/19812	6.25	1684	0	0
F-E	16:52:48.0	16:58:57.0	65000/19812	6.25	2770	0	0
G-C	17:01:30.0	17:11:39.0	65000/19812	6.25	2574	1	0
H-I	17:14:28.0	17:22:13.0	65000/19812	6.25	2872	0	0
J-K	17:24:34.0	17:30:31.0	65000/19812	6.25	2080	0	0
L-M	17:35:33.0	17:42:16.0	65000/19812	6.25	7674	0	0
N-O	17:46:11.0	17:52:25.0	65000/19812	6.25	2577	0	0
P-Q	17:53:17.0	18:01:32.0	65000/19812	6.25	2576	1	0
R-S	18:05:33.0	18:12:14.0	65000/19812	6.25	1981	0	0
T-U	18:17:51.0	18:21:51.0	65000/19812	6.25	1486	0	0
V-S	18:29:16.0	18:37:53.0	65000/19812	6.25	3268	0	0
W-X	18:40:21.0	18:47:47.0	65000/19812	6.25	2872	0	0
Y-Z	18:54:12.0	19:03:30.0	65000/19812	6.25	3565	0	0



FLIGHT 94-120 21 JULY 1984 A/C 708 RC-10 / AVIRIS / AOI



FLIGHT 94-120
 21 JULY 1994
 A/C 708
 RC-10 / AVIRIS / ACCI
 ONC E-16



ONC E-16

RC-10 / AVIRIS / AOCC

A/C 708

21 JULY 1994

FLIGHT 94-120