

FLIGHT SUMMARY REPORT

Flight #: 90-121B
Date: 12 August 1990
Sensor Package: Wild-Heerbrug RC-10
Area(s) Covered: Montana and Idaho

Investigator(s): Functional Flight Check
Flight Request: 90X001

Aircraft #: 706
Julian Date: 224

SENSOR DATA

Accession #: 04097
Sensor ID #: 035
Sensor Type: RC-10
Focal Length: 6"
153.46 mm
Film Type: Panatomic-X
Aerographic II
EK-2412
Filtration: Wratten-12
Spectral Band: 510-700 nm
f Stop: 5.6
Shutter Speed: 1/150
of Frames: 32
% Overlap: 60
Quality: Excellent
Remarks: Clock set for
PDT -- add 7 hours
for correct GMT

Airborne Science and Applications Program

The Airborne Science and Applications Program (ASAP) is supported by three ER-2 high altitude Earth Resources Survey aircraft. These aircraft are operated by the High Altitude Missions Branch at NASA-Ames Research Center, Moffett Field, California. The ER-2s are used as readily deployable high altitude sensor platforms to collect remote sensing and *in situ* data on earth resources, celestial phenomena, atmospheric dynamics, and oceanic processes. Additionally, these aircraft are used for electronic sensor research and development and satellite investigative support.

The ER-2s are flown from various deployment sites in support of scientific research sponsored by NASA and other federal, state, university, and industry investigators. Data are collected from deployment sites in Kansas, Texas, Virginia, Florida, and Alaska. Cooperative international scientific projects have deployed the aircraft to sites in Great Britain, Australia, Chile, and Norway.

Photographic and digital imaging sensors are flown aboard the ER-2s in support of research objectives defined by the sponsoring investigators. High resolution mapping cameras and digital multispectral imaging sensors are utilized in a variety of configurations in the ER-2s' four pressurized experiment compartments. The following provides descriptions of the camera systems flown onboard the ER-2s.

Camera Systems

Various camera systems and films are used for photographic data collection. Film types include high definition color infrared, natural color, and black and white emulsions. Available photographic systems are as follows:

- Wild-Heerbrug RC-10 metric mapping camera
 - 9 x 9 inch film format
 - 6 inch focal length lens provides area coverage of 16 x 16 nautical miles from 65,000 feet
 - 12 inch focal length lens provides area coverage of 8 x 8 nautical miles from 65,000 feet
- Hycon HR-732 large scale mapping camera
 - 9 x 18 inch film format
 - 24 inch focal length lens provides area coverage of 4 x 8 nautical miles from 65,000 feet
- IRIS II Panoramic camera
 - 4.5 x 34.7 inch film format
 - 24 inch focal length lens
 - 90 degree field of view provides area coverage of 2 x 21.4 nautical miles from 65,000 feet

The U.S. Geological Survey's EROS Data Center at Sioux Falls, South Dakota serves as the archive and product distribution facility for NASA-Ames aircraft acquired photographic and digital imagery. For information regarding photography and digital data (including areas of coverage, products, and product costs) contact EROS Data Center, Customer Services, Sioux Falls, South Dakota 57198 (Telephone: (605) 594-6151).

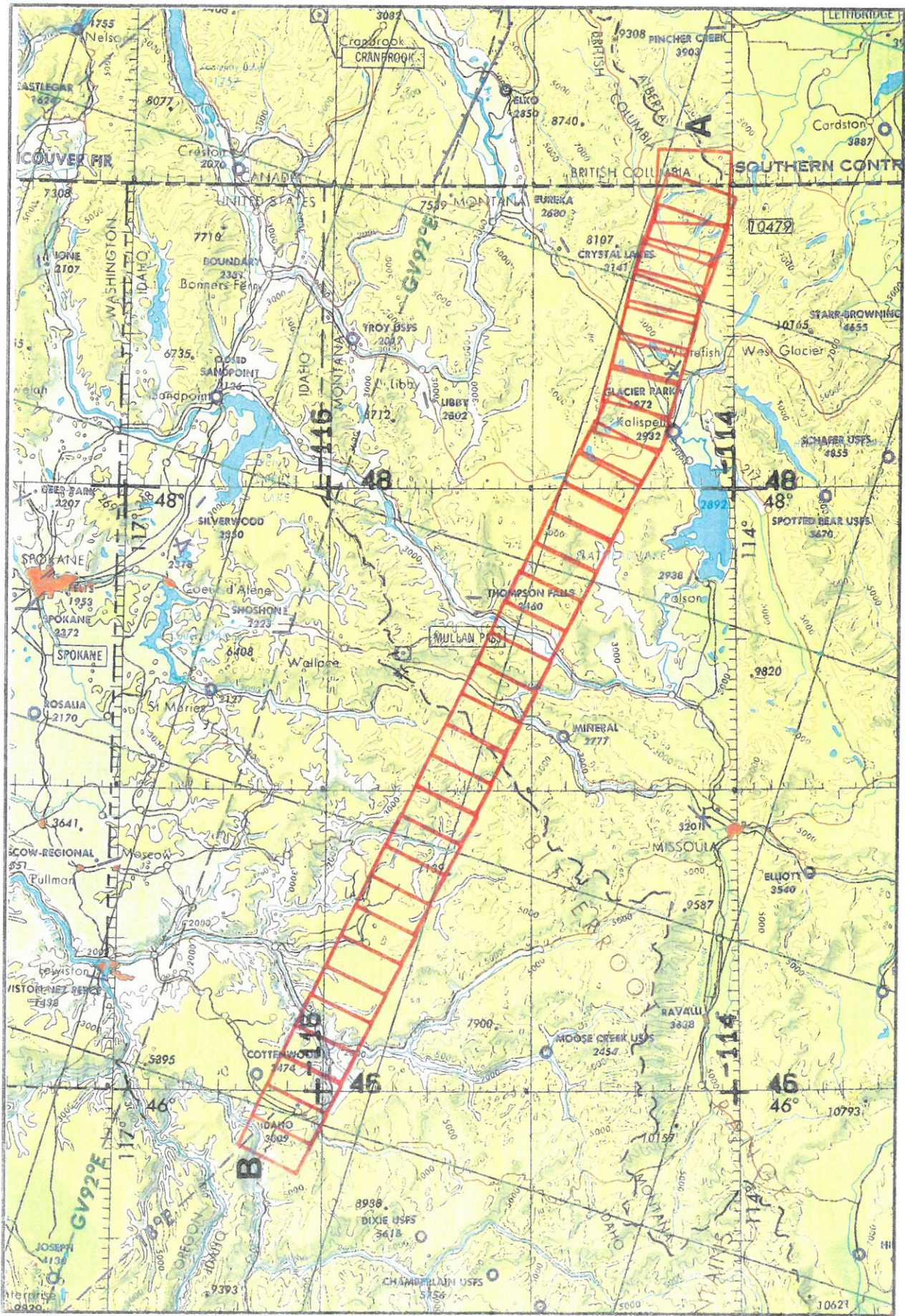
Additional information regarding ER-2 acquired photographic and digital data is available through the Aircraft Data Facility at Ames Research Center. For specific information regarding flight documentation, sensor parameters, and areas of coverage contact the Aircraft Data Facility, NASA-Ames Research Center, Mail Stop 240-6, Moffett Field, California 94035-1000 (Telephone: (415) 604-6252).

**CAMERA FLIGHT LINE DATA
FLIGHT NO. 90-121**

Accession # 04097

Sensor # 035

Check Points	Frame Numbers	Time (GMT-hr, min, sec)		Altitude, MSL feet/meters	Cloud Cover/Remarks
		START	END		
A - B	0990-1021	20:35:56	21:04:54	65000/19800	10-30% scattered cumulus (frames 0990-0994); 10-60% scattered cumulus (frames 0996-1018); minor cumulus (frames 1020-1021)
CAMERA READINGS ADJUSTED 7 HOURS FOR CORRECT GMT					



FLIGHT 80-121B 12 August 1980 A/C 706 RC-10 -- 2412 Accession # 04097 JNC 43