

FLIGHT SUMMARY REPORT

Flight #: 90-119
Date: 27 July 1990
Sensor Package: Wild-Heerbrug RC-10
Airborne Visible and Infrared Imaging
Spectrometer (AVIRIS)
Area(s) Covered: Mt. Shasta/Mt. Hood

Investigator(s): Pieri, Jet Propulsion Laboratory
Flight Request: 90L226D

Aircraft #: 709
Julian Date: 208

SENSOR DATA

Accession #:	04077	-----
Sensor ID #:	031	099
Sensor Type:	RC-10	AVIRIS
Focal Length:	6" 153.05 mm	-----
Film Type:	High Definition Aerochrome IR SO-131	-----
Filtration:	cc.30B	-----
Spectral Band:	510-900 nm	-----
f Stop:	4	-----
Shutter Speed:	1/150	-----
# of Frames:	11	-----
% Overlap:	60	-----
Quality:	Excellent	-----
Remarks:		

Airborne Science and Applications Program

The Airborne Science and Applications Program (ASAP) is supported by three ER-2 high altitude Earth Resources Survey aircraft. These aircraft are operated by the High Altitude Missions Branch at NASA-Ames Research Center, Moffett Field, California. The ER-2s are used as readily deployable high altitude sensor platforms to collect remote sensing and *in situ* data on earth resources, celestial phenomena, atmospheric dynamics, and oceanic processes. Additionally, these aircraft are used for electronic sensor research and development and satellite investigative support.

The ER-2s are flown from various deployment sites in support of scientific research sponsored by NASA and other federal, state, university, and industry investigators. Data are collected from deployment sites in Kansas, Texas, Virginia, Florida, and Alaska. Cooperative international scientific projects have deployed the aircraft to sites in Great Britain, Australia, Chile, and Norway.

Photographic and digital imaging sensors are flown aboard the ER-2s in support of research objectives defined by the sponsoring investigators. High resolution mapping cameras and digital multispectral imaging sensors are utilized in a variety of configurations in the ER-2s' four pressurized experiment compartments. The following provides a description of the digital multispectral sensor used for data collection during this flight.

Airborne Visible and Infrared Imaging Spectrometer

The Airborne Visible and Infrared Imaging Spectrometer (AVIRIS) is the second in the series of imaging spectrometer instruments developed at the Jet Propulsion Laboratory (JPL) for earth remote sensing. This instrument uses scanning optics and a four-line arrays of detectors to image a 614 pixel swath simultaneously in 224 contiguous spectral bands (0.4-2.4 μm).

AVIRIS parameters are as follows:

IFOV:	1 mrad
GIFOV (at 20 km):	20 m
FOV:	30°
GFOV (at 20 km):	11 km
Spectral Coverage:	0.41 - 2.45 μm
Number of Spectral Bands:	224
Digitization:	10 Bits
Data Rate:	17 MBPS

<u>Spectrometer</u>	<u>Wavelength Range</u>	<u>Number of Bands</u>	<u>Sampling Interval</u>
1	0.41 - 0.70 μm	31	9.4 nm
2	0.68 - 1.27 μm	63	9.4 nm
3	1.25 - 1.86 μm	63	9.7 nm
4	1.84 - 2.45 μm	63	9.7 nm

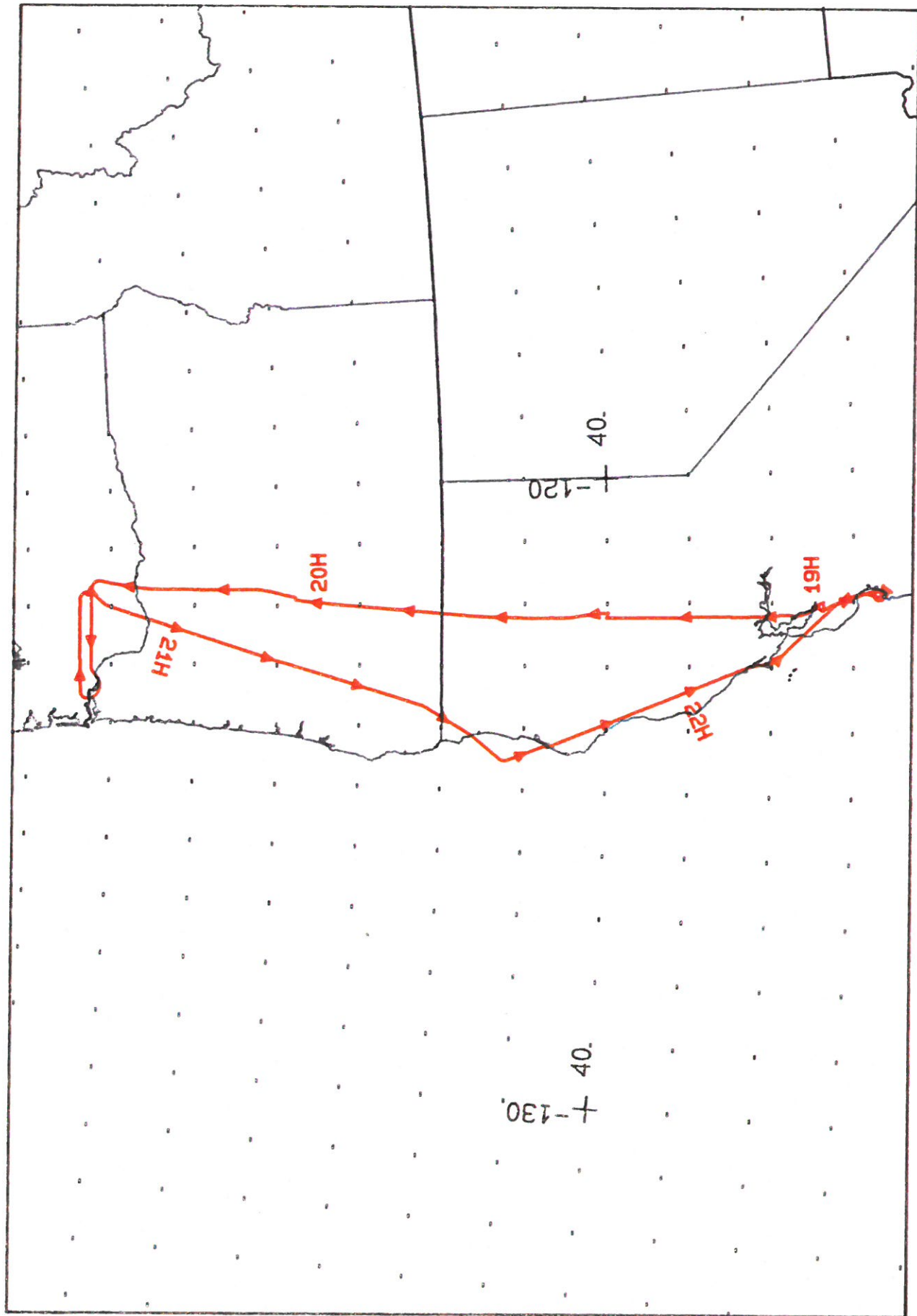
All AVIRIS data is decommutated and archived at JPL and not currently available for public distribution. For further information contact Rob Greene at Jet Propulsion Laboratory, 4800 Oak Grove Drive, Mail Stop 11-116, Pasadena, California 91109-8099.

CAMERA FLIGHT LINE DATA
FLIGHT NO. 90-119

Accession # 04077

Sensor # 031

Check Points	Frame Numbers	Time (GMT-hr, min, sec)		Altitude, MSL feet/meters	Cloud Cover/Remarks
		START	END		
A - B	2339-2340	19:42:07	19:42:49	65000/19800	10% cumulus
C - D	2341-2345	20:16:18	20:18:10	"	Clear
E - F	2346-2349	22:15:37	22:18:23	"	10-60% strato cumulus



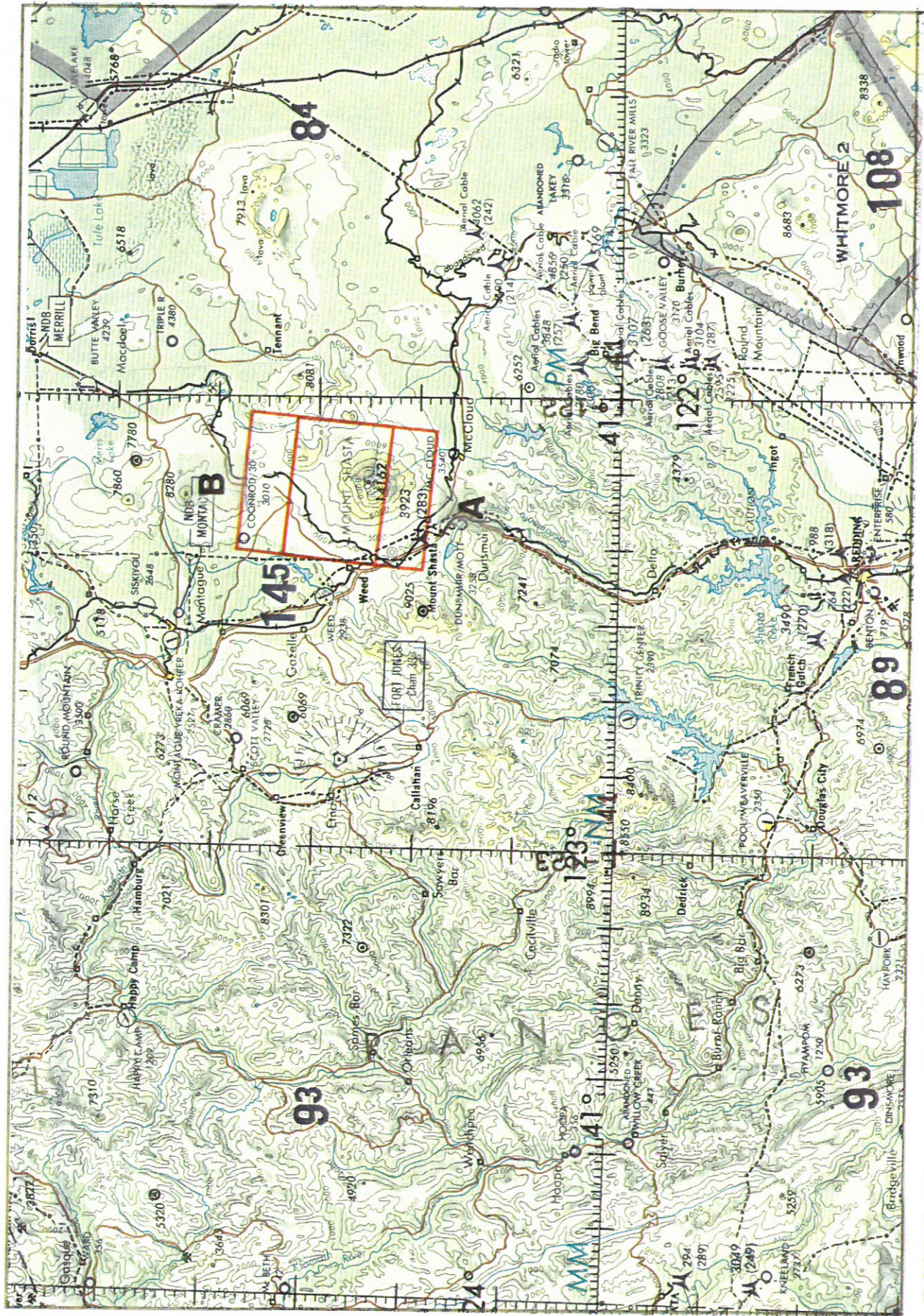
FLIGHT 90-119

27 July 1990

A/C 709

AVIRIS / RC-10

Mt. St. Helens, Washington



FLIGHT 90-119 27. JULY 1990 A/C 709 RC-10 ACCESSION #4077 ONC F-16

