

FLIGHT SUMMARY REPORT

Flight Number: 03-951/9051
Calendar/Julian Date: 08 August 2003 (220)
Sensor Package: Wild-Heerbrugg RC-30
MODIS/ASTER Airborne Simulator (MASTER)
Area(s) Covered: Central Valley
Investigator(s): Penberth, CA Dept. of Conservation **Aircraft Number:** 809

SENSOR DATA

Accession #:	05781	—
Sensor ID #:	126	124
Sensor Type:	RC-30	MASTER
Focal Length:	153.21 mm 6"	—
Film Type:	Aerochrome IR SO-734	—
Filtration:	Wratten 12 + 2.2 AV	—
Spectral Band:	510-900 nm	—
f-Stop:	8	—
Shutter Speed:	1/350	—
# of Frames:	265	—
% Overlap:	60	—
Quality:	Excellent	—
Remarks:		

MODIS/ASTER AIRBORNE SIMULATOR (MASTER) FLIGHT LINE INFORMATION FOR 08 Aug 2003
 NASA FLIGHT NUMBER 03-951-00

FLTL	SITE	LINE	RUN	START OF FLIGHT LINE			END OF FLIGHT LINE			FLIGHT DATA			
				TIME HH:MM:SS	LAT DEG	LON DEG	TIME HH:MM:SS	LAT DEG	LON DEG	SCAN LINES	SOLAR ZEN AZIM	HEAD DEG	ALT M (MSL)
1	CVP	07	1	17:05:51	35.422	-119.394	17:11:27	35.011	-119.981	2087	43.5 104.4	228.62	18653
2	CVP	08	1	17:12:21	34.923	-120.038	17:14:17	34.708	-120.045	722	42.8 104.6	180.14	19304
3	CVP	09	1	17:16:19	34.698	-120.225	17:43:04	37.742	-120.233	9999	40.3 109.7	0.00	19640
4	CVP	10	1	17:43:04	37.742	-120.233	17:54:00	38.993	-120.244	4094	37.6 116.6	2.78	19856
5	CVP	11	1	17:56:23	38.994	-120.474	18:23:05	35.999	-120.467	9999	33.6 121.4	176.15	19812
6	CVP	12	1	18:23:06	35.999	-120.467	18:33:33	34.828	-120.467	3914	29.4 124.6	177.64	19891
7	CVP	13	1	18:36:00	34.824	-120.716	19:02:42	37.882	-120.716	9999	27.0 133.9	2.42	19787
8	CVP	14	1	19:02:42	37.882	-120.716	19:15:49	39.375	-120.739	4912	26.1 145.8	1.86	19868
9	CVP	15	1	19:18:19	39.350	-120.961	19:45:00	36.366	-120.951	9999	23.4 156.9	175.31	19850
10	CVP	16	1	19:45:00	36.366	-120.951	19:56:37	35.080	-120.951	4353	20.1 166.8	177.36	19880
11	CVP	17	1	19:59:17	35.119	-121.183	20:25:58	38.193	-121.182	9999	20.7 180.7	1.00	19823
12	CVP	18	1	20:25:58	38.193	-121.182	20:36:49	39.423	-121.182	4062	23.2 192.7	3.42	19843
13	CVP	19	1	20:38:02	39.535	-121.280	20:40:18	39.630	-121.600	848	24.2 196.3	292.76	19778
14	CVP	20	1	20:40:47	39.653	-121.670	20:45:53	39.996	-122.313	1911	24.6 197.3	305.60	19774
15	CVP	21	1	20:50:06	40.044	-122.871	21:09:50	37.829	-122.885	7391	24.8 205.3	179.62	19812
16	CVP	22	1	21:12:27	37.881	-123.131	21:31:37	40.073	-123.134	7181	26.8 215.6	0.50	19778
17	CVP	23	1	21:34:02	40.077	-123.379	21:47:48	38.530	-123.384	5164	29.3 223.2	178.94	19897
18	CVP	24	1	21:50:23	38.561	-123.630	22:03:34	40.070	-123.632	4938	31.3 229.0	1.00	19892
19	CVP	25	1	22:05:49	40.090	-123.873	22:17:11	38.823	-123.883	4260	33.5 233.6	181.94	19842
20	CVP	26	1	22:18:05	38.731	-123.833	22:44:46	36.949	-120.968	9999	37.1 242.9	131.67	19870
21	CVP	27	1	22:44:46	36.949	-120.968	22:59:17	35.976	-119.431	5440	41.9 251.9	129.16	19146

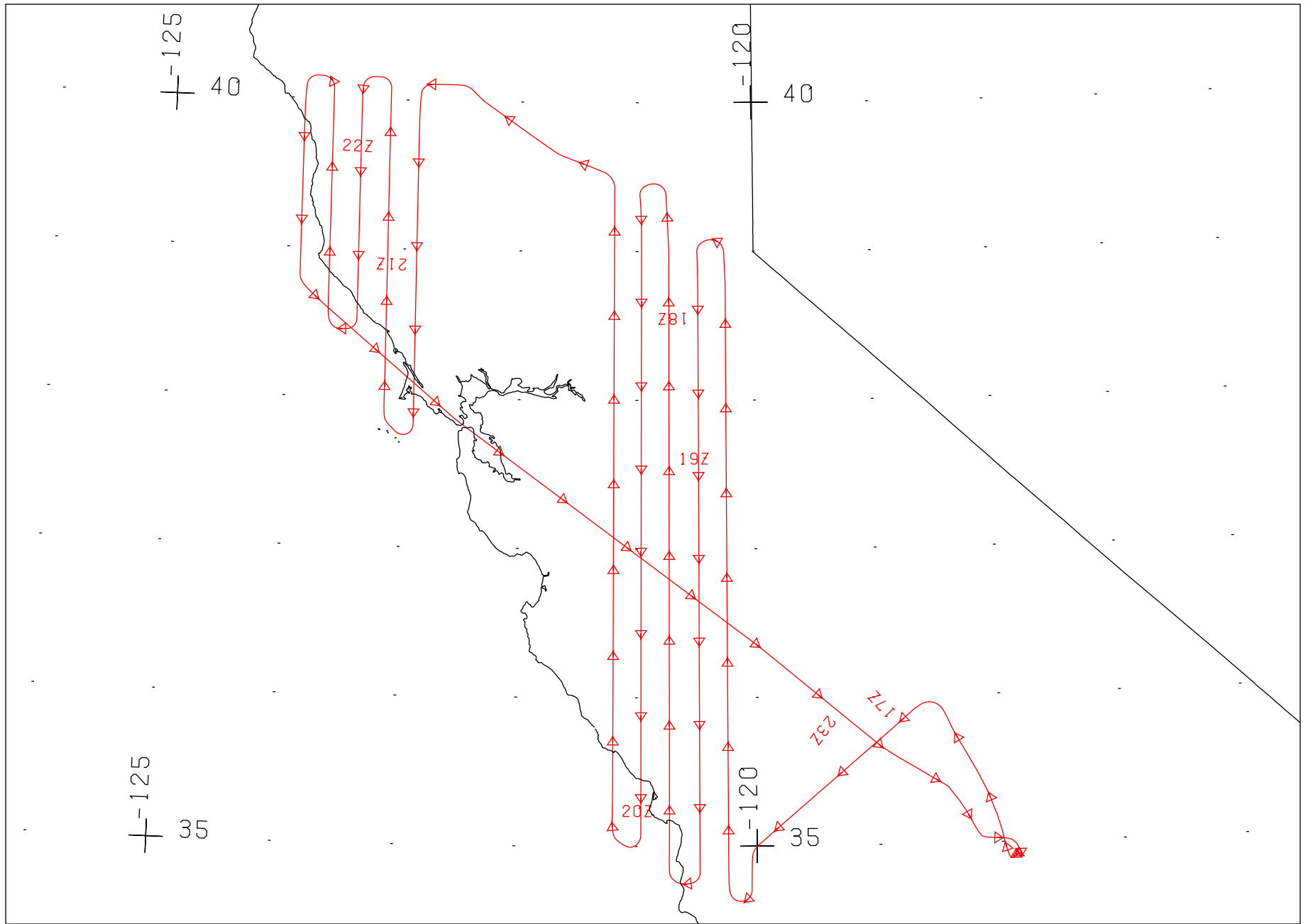
NUMBER OF FILES FOR THIS FLIGHT = 21
 TOTAL NUMBER OF SCAN LINES = 121271
 DATE THESE FILES WERE PROCESSED = 30-Sep-2003
 DATE THIS LIST WAS CREATED = Tue Sep 30 13:01:39 PDT 2003
 GRANULE VERSION = 1

CAMERA FLIGHT LINE DATA
FLIGHT NO. 03-9051 / 03-951

Accession # 05781

Sensor # 126

Check Points	Frame Numbers	Time (GMT-hr, min, sec)		Altitude, MSL feet/meters	Cloud Cover/Remarks
		START	END		
A - B	0208-0236	17:16:43	17:43:38	66400/20240	Clear
C - D	0237-0275	17:56:31	18:32:55	66700/20340	Minor coastal stratus, frames 0272-0274
E - F	0276-0313	18:36:27	19:11:50	66600/20300	Minor-10% coastal stratus, frames 0277-0280
G - H	0314-0354	19:18:13	19:56:29	66600/20300	Clear
I - J	0355-0391	20:01:58	20:36:22	66600/20300	Clear
K - L	0392-0413	20:50:06	21:09:16	66600/20300	15-40% cumulus, frames 0392-0398; 10% stratus, frames 0410-0412; frame 0392 oblique
M - N	0414-0432	21:13:29	21:30:40	66500/20270	Minor-20% cumulus, frames 0420-0432
O - P	0433-0447	21:34:10	21:47:32	66700/20340	Minor-40% cumulus
Q - R	0448-0460	21:50:40	22:02:07	67000/20430	10-40% coastal stratus, frames 0450-0460
S - T	0461-0472	22:06:12	22:16:42	66800/20370	10-30% coastal stratus

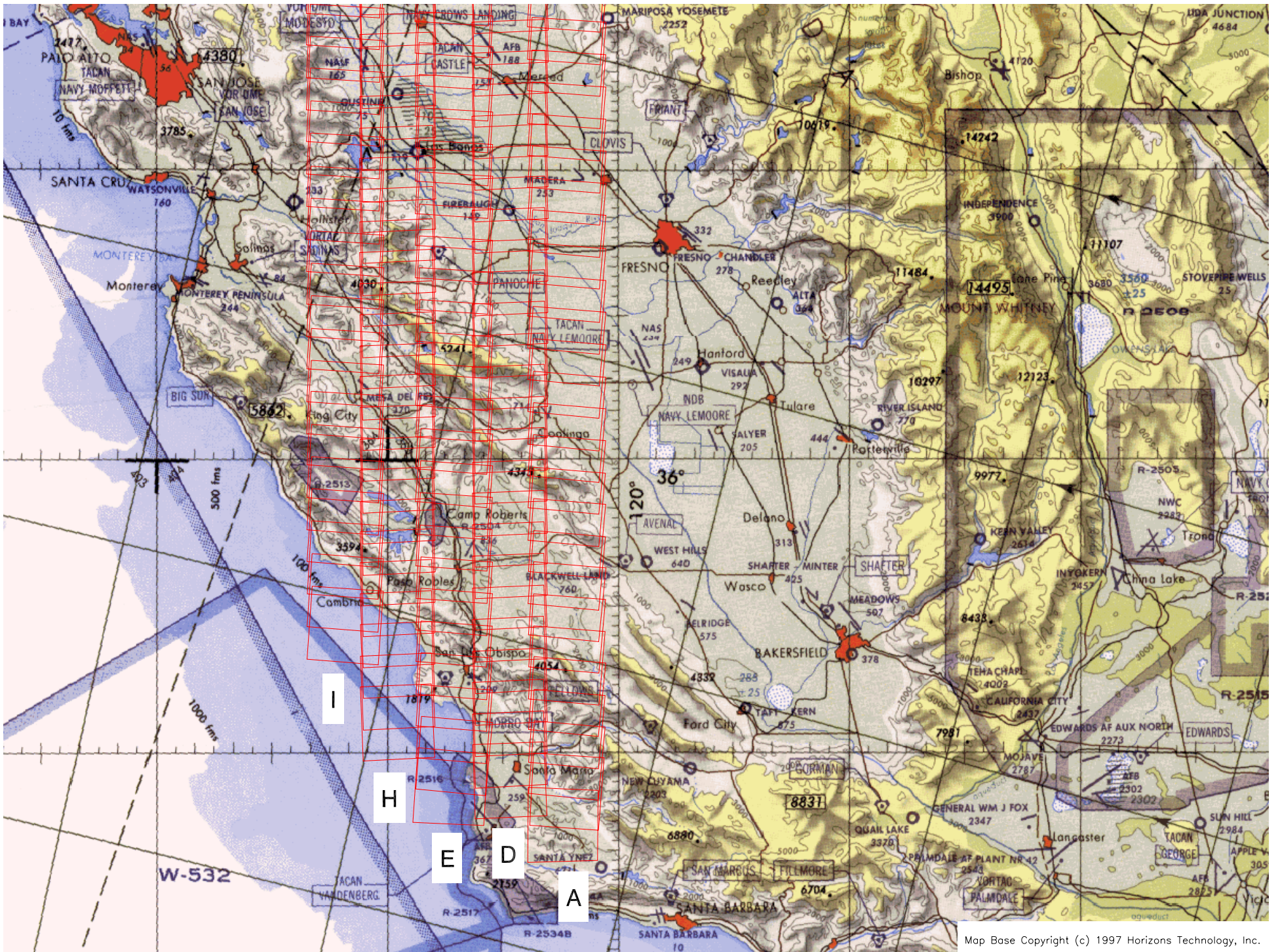


FLIGHT 03-9051 / 03-951

8 AUGUST 2003

A/C 809

RC-30 / MASTER



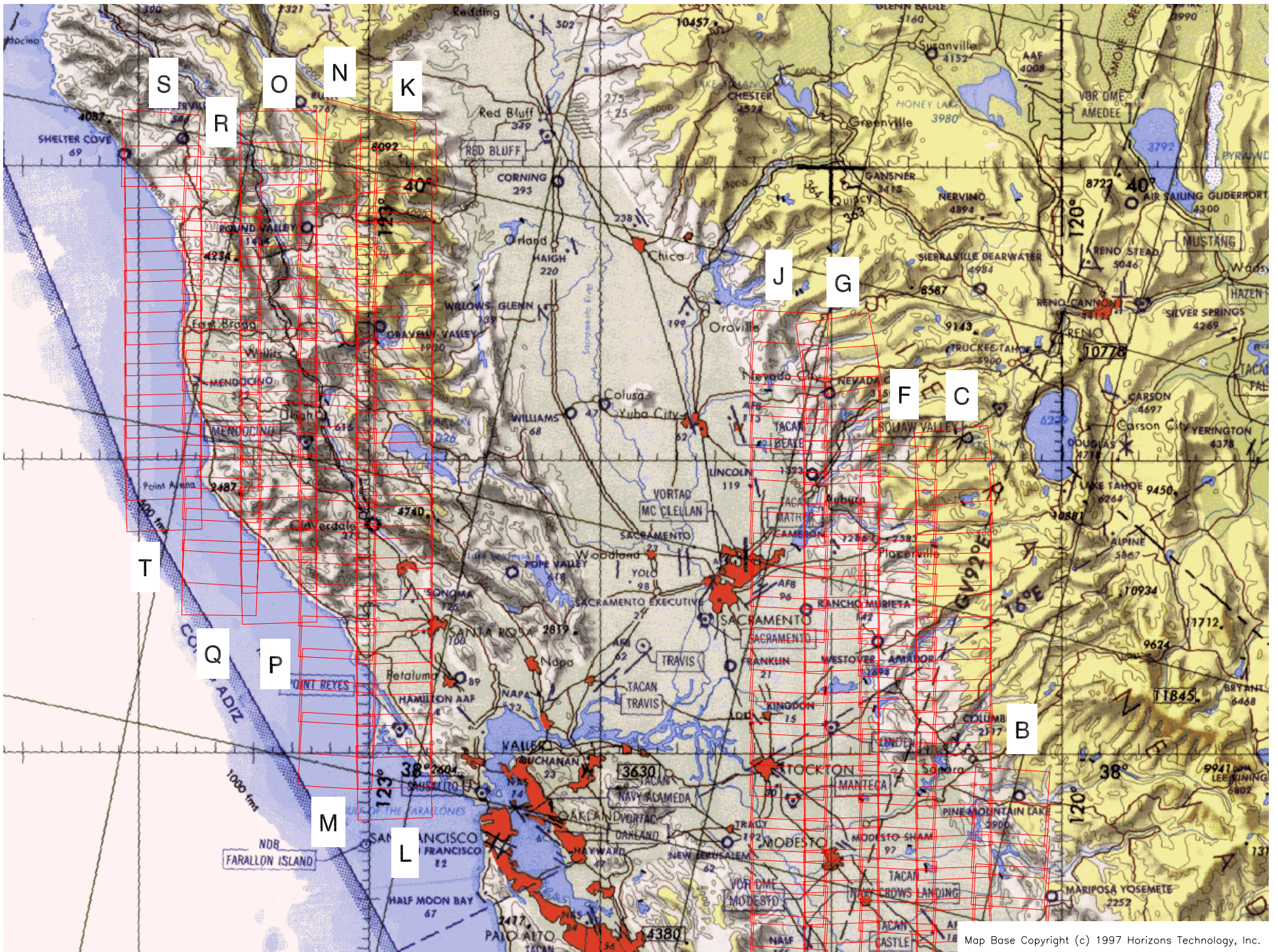
Map Base Copyright (c) 1997 Horizons Technology, Inc.

Flight 03-9051 / 03-951

8 August 2003

A/C 809

RC-30



Map Base Copyright (c) 1997 Horizons Technology, Inc.

Flight 03-9051 / 03-951

8 August 2003

A/C 809

RC-30