

## FLIGHT SUMMARY REPORT

**Flight Number:** 03-950/9050  
**Calendar/Julian Date:** 05 August 2003 (217)  
**Sensor Package:** Wild-Heerbrugg RC-30  
MODIS/ASTER Airborne Simulator (MASTER)  
**Area(s) Covered:** Imperial Valley/Salton Sea  
**Investigator(s):** Penberth, CA Dept. of Conservation      **Aircraft Number:** 809

### SENSOR DATA

<b>Accession #:</b>	05778	—
<b>Sensor ID #:</b>	126	124
<b>Sensor Type:</b>	RC-30	MASTER
<b>Focal Length:</b>	153.21 mm 6"	—
<b>Film Type:</b>	Aerochrome IR SO-734	—
<b>Filtration:</b>	Wratten 12 + 2.2 AV	—
<b>Spectral Band:</b>	510-900 nm	—
<b>f-Stop:</b>	8	—
<b>Shutter Speed:</b>	1/350	—
<b># of Frames:</b>	26	—
<b>% Overlap:</b>	60	—
<b>Quality:</b>	Excellent	—
<b>Remarks:</b>		

MODIS/ASTER AIRBORNE SIMULATOR (MASTER) FLIGHT LINE INFORMATION FOR 05 Aug 2003  
 NASA FLIGHT NUMBER 03-950-00

FLTL	SITE	LINE	RUN	START OF FLIGHT LINE			END OF FLIGHT LINE			FLIGHT DATA				
				TIME HH:MM:SS	LAT DEG	LON DEG	TIME HH:MM:SS	LAT DEG	LON DEG	SCAN LINES	SOLAR ZEN	AZIM	HEAD DEG	ALT M (MSL)
1	CVP	01	1	17:23:51	33.947	-116.763	17:30:45	33.258	-116.388	2576	36.5	107.9	154.69	19586
2	CVP	02	1	17:31:32	33.208	-116.313	17:40:46	33.199	-115.146	3452	34.0	110.3	94.48	19899
3	CVP	03	1	17:45:16	32.997	-114.974	17:53:10	33.000	-116.075	2958	31.2	113.6	269.69	19850
4	CVP	04	1	17:57:17	32.802	-116.227	18:05:47	32.799	-115.144	3185	28.9	116.7	95.34	19829
5	CVP	05	1	18:08:02	32.990	-115.029	18:10:05	33.202	-115.165	768	27.2	120.3	336.10	19800
6	CVP	06	1	18:10:31	33.241	-115.205	18:16:59	33.699	-115.921	2425	26.9	121.9	308.37	19821

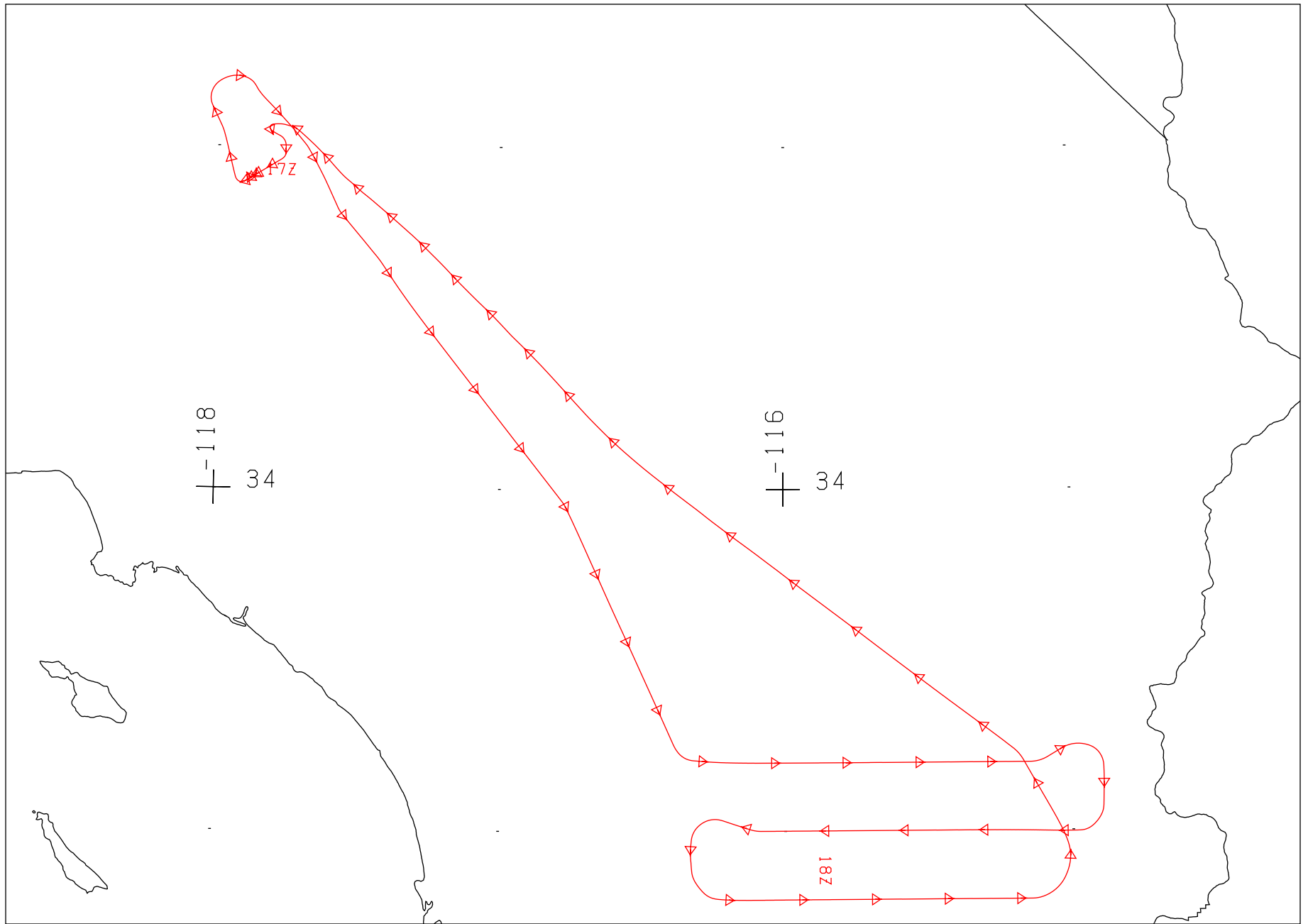
NUMBER OF FILES FOR THIS FLIGHT = 6  
 TOTAL NUMBER OF SCAN LINES = 15364  
 DATE THESE FILES WERE PROCESSED = 30-Sep-2003  
 DATE THIS LIST WAS CREATED = Tue Sep 30 12:22:42 PDT 2003  
 GRANULE VERSION = 1

**CAMERA FLIGHT LINE DATA**  
**FLIGHT NO. 03-9050 / 03-950**

Accession # 05778

Sensor # 126

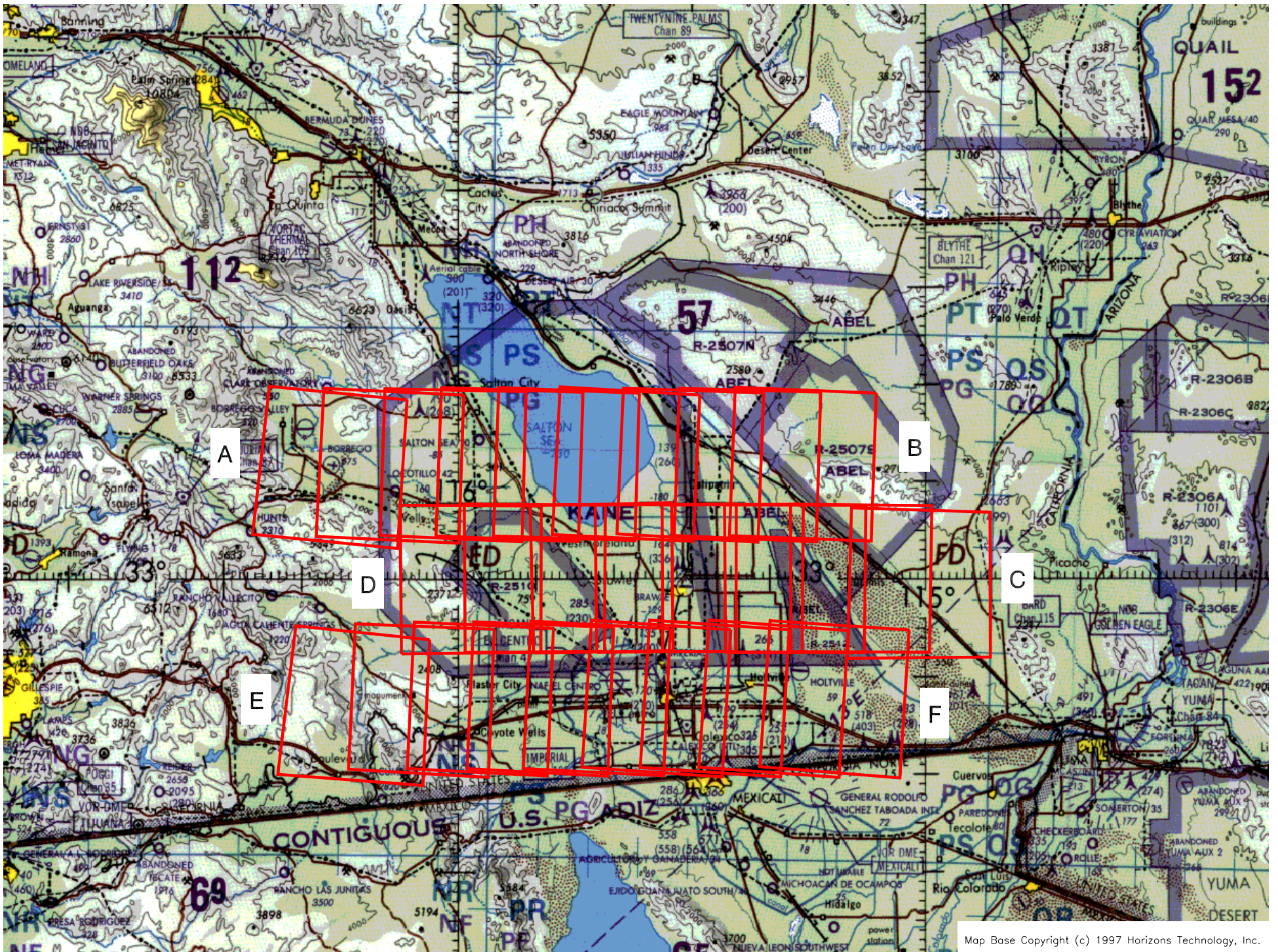
Check Points	Frame Numbers	Time (GMT-hr, min, sec)		Altitude, MSL feet/meters	Cloud Cover/Remarks
		START	END		
A - B	0169-0177	17:31:56	17:39:54	66900/20400	Clear
C - D	0178-0185	17:45:23	17:52:21	66500/20270	Thin cirrus, frame 0185
E - F	0186-0194	17:57:26	18:05:23	66500/20270	Clear



FLIGHT 03-9050 / 03-950

5 AUGUST 2003

RC-30 / MASTER



Flight 03-9050 / 03-950

5 August 2003

A/C 809

RC-30