

FLIGHT SUMMARY REPORT

Flight Number: 03-942/9042
Calendar/Julian Date: 13 June 2003 • 164
Sensor Package: Wild-Heerbrugg RC-10
MODIS Airborne Simulator (MAS)
(AirMISR)
Area(s) Covered: Railraod Valley, NV
Investigator(s): Bruegge, JPL **Aircraft #:** 809

SENSOR DATA

Accession #:	05776	-----	-----
Sensor ID #:	031	108	120
Sensor Type:	RC-10	MAS-50	AirMISR
Focal Length:	153.05 mm 6"	-----	-----
Film Type:	Aerochrome IR SO-734	-----	-----
Filtration:	Wratten 12 + 2.2 AV	-----	-----
Spectral Band:	510-900nm	-----	-----
f Stop:	8	-----	-----
Shutter Speed:	1/350	-----	-----
# of Frames:	4	-----	-----
% Overlap:	10 or 60	-----	-----
Quality:	Fair	-----	-----
Remarks:	Subtract 6 seconds for correct UTC		

MODIS AIRBORNE SIMULATOR (MAS) FLIGHT LINE INFORMATION FOR 13 Jun 2003
 NASA FLIGHT NUMBER 03-942

START OF FLIGHT LINE

END OF FLIGHT LINE

FLIGHT DATA

FLTL	TIME		LAT	LON	SOLAR		TIME		LAT	LON	SOLAR		SCAN	HEAD	ALT
	HH:MM:SS		DEG	DEG	ZEN	AZIM	HH:MM:SS		DEG	DEG	ZEN	AZIM	LINES	DEG	M (MSL)
1	17:21:19		37.996	-117.239	34.7	104.5	17:36:50		39.279	-115.736	31.1	111.7	5796	44.6	19972
2	17:45:10		39.257	-115.453	29.4	114.4	17:56:12		38.034	-115.762	27.1	115.4	4121	191.1	19854
3	18:01:31		38.205	-115.709	26.2	117.5	18:11:16		39.294	-115.460	25.0	123.4	3647	11.2	19738
4	18:24:39		39.335	-115.429	22.9	129.0	18:36:29		38.049	-115.759	20.5	131.5	4421	191.1	19923
5	18:41:43		38.299	-115.689	19.9	134.9	18:50:48		39.308	-115.459	19.4	142.5	3391	11.5	19806
6	18:55:21		39.429	-115.404	18.9	145.6	19:07:45		38.083	-115.751	16.6	150.8	4633	189.3	19758
7	19:13:38		38.264	-115.697	16.3	155.6	19:22:29		39.278	-115.464	16.6	164.4	3307	12.2	19898
8	19:27:15		39.382	-115.411	16.4	168.4	19:39:11		38.096	-115.746	14.9	176.8	4464	194.1	20038
9	19:47:38		38.283	-115.698	15.1	184.5	19:54:50		39.109	-115.503	16.1	190.9	2689	11.8	19965
10	19:59:27		39.013	-114.989	16.3	196.3	20:14:00		37.879	-113.564	17.0	213.1	5441	137.6	19932
11	20:16:51		37.608	-113.681	17.0	215.3	20:24:32		36.894	-114.279	17.1	220.2	2875	216.0	19863
12	20:25:00		36.846	-114.304	17.1	220.5	20:34:06		35.847	-114.502	17.5	227.9	3400	192.1	20016
13	20:34:59		35.771	-114.569	17.6	228.4	20:42:58		35.381	-115.554	18.0	231.5	2980	243.8	20024

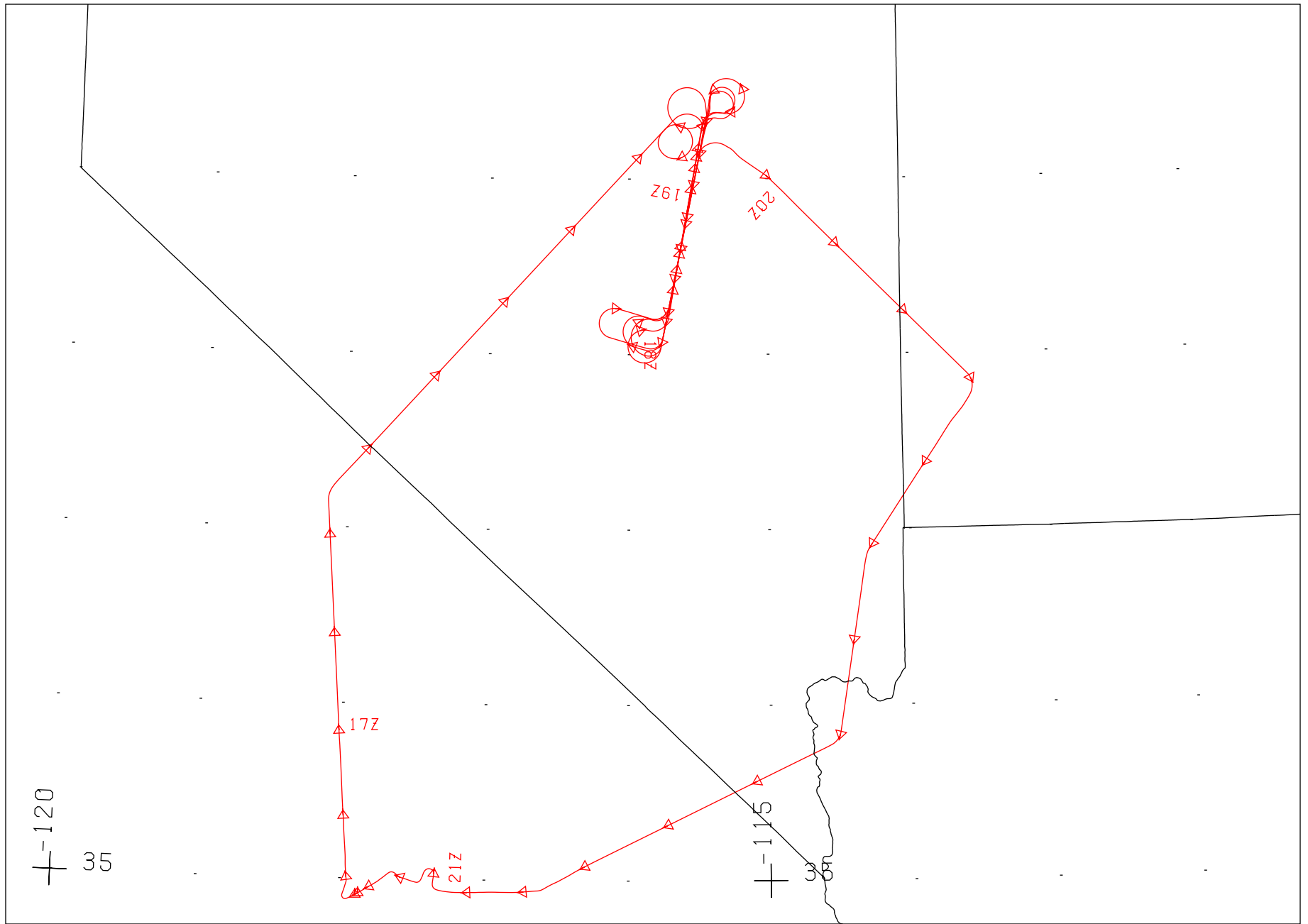
NUMBER OF FILES FOR THIS FLIGHT = 13
 TOTAL NUMBER OF SCAN LINES = 51165
 DATE THESE FILES WERE PROCESSED = 16-Jul-2003
 DATE THIS LIST WAS CREATED = Thu Jul 17 10:16:19 PDT 2003
 GRANULE VERSION = 1

CAMERA FLIGHT LINE DATA
FLIGHT NO. 03-9042 / 03-942

Accession # 05776

Sensor # 031

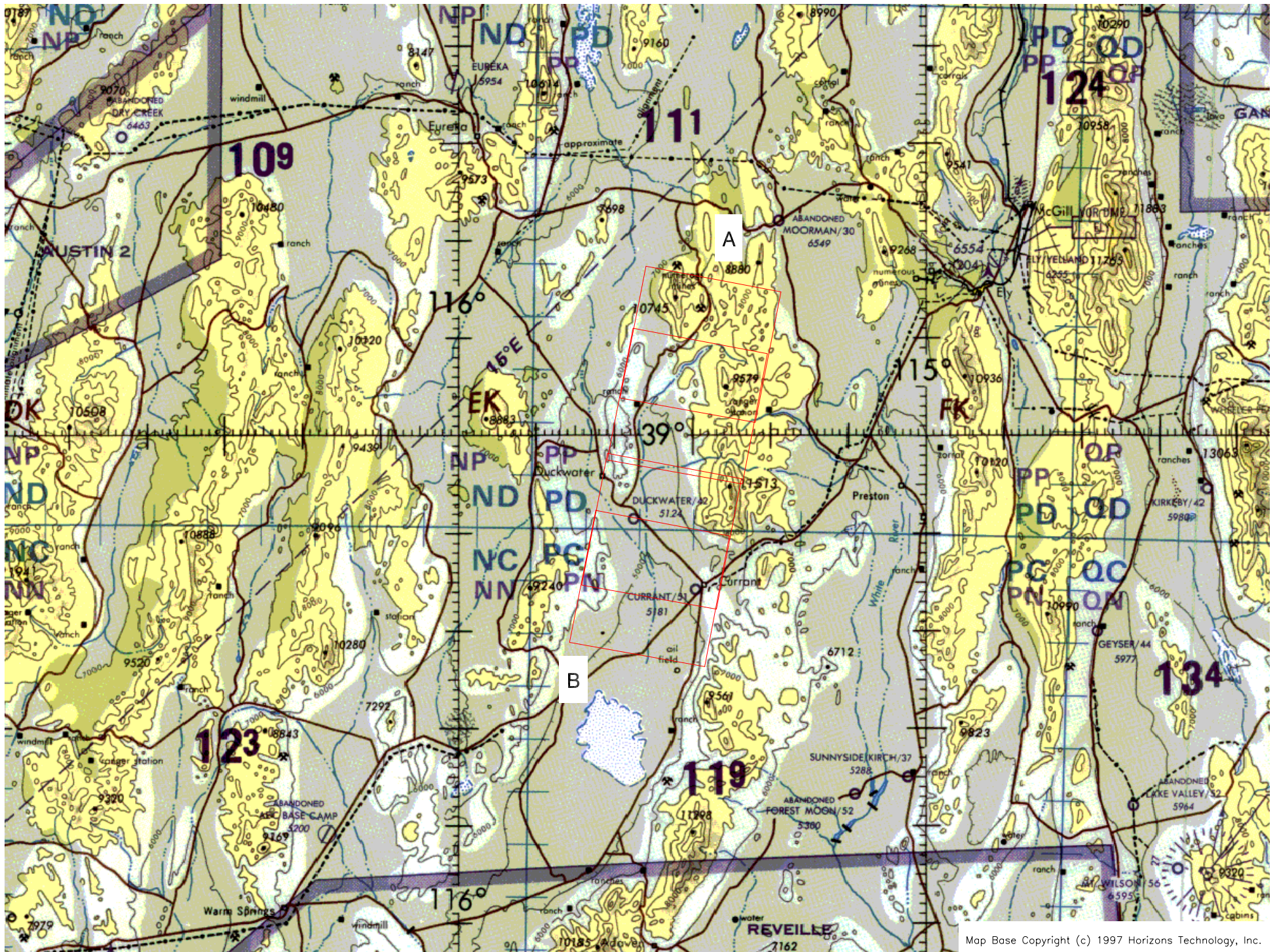
Check Points	Frame Numbers	Time (GMT-hr, min, sec)		Altitude, MSL feet/meters	Cloud Cover/Remarks
		START	END		
A - B	2710-2715	18:26:26	18:30:14	65400/19940	10-20% cumulus, frames 2710, 2711 and 2713 Shutter malfunction, no image acquired, frames 2712 or 2714 Double exposure, frame 2715



FLIGHT 03-9042 / 03-942

13 JUNE 2003

MAS50 / RC-10 / AIRMISR



Flight 03-9042 / 03-942

13 June 2003

A/C 809

RC-10