

FLIGHT SUMMARY REPORT

Flight Number: 03-923/9023

Calendar/Julian Date: 12 December 2002 • 346

Sensor Package: Dual Wild-Heerbrugg RC-10
 MODIS Airborne Simulator (MAS)
 Cloud Physics Lidar (CPL)
 Video Imaging System (VIS)
 Mini Video Imaging System (MVIS)

Area(s) Covered: Southwest United States (Factory Butte, UT)

Investigator(s): Ferry San Antonio, TX to NASA-DFRC **Aircraft #:** 809

SENSOR DATA – Page 1/2

Accession #:	05721	05722	—	—
Sensor ID #:	031	026	108	137
Sensor Type:	RC-10	RC-10	MAS	CPL
Focal Length:	153.05 mm 6"	304.97 mm 12"	—	—
Film Type:	Panatomic X Aerographic II, EK2412	Aerochrome IR SO-734	—	—
Filtration:	Wratten 12 + 2.2 AV	Wratten 12	—	—
Spectral Band:	510-700 nm	510-900 nm	—	—
f-Stop:	4	8	—	—
Shutter Speed:	1/275	1/275	—	—
# of Frames:	4	8	—	—
% Overlap:	60	60	—	—
Quality:	Excellent	Fair	—	—
Remarks:	Subtract 30 seconds for correct UTC	Subtract 4 seconds for correct UTC		

FLIGHT SUMMARY REPORT

SENSOR DATA – Page 2/2
Flight #03-923/9023

Accession #:	—	—
Sensor ID #:	118	136
Sensor Type:	VIS	MVIS
Focal Length:	—	—
Film Type:	—	—
Filtration:	—	—
Spectral Band:	—	—
f-Stop:	—	—
Shutter Speed:	—	—
# of Frames:	—	—
% Overlap:	—	—
Quality:	—	—
Remarks:		

MODIS AIRBORNE SIMULATOR (MAS) FLIGHT LINE INFORMATION FOR 12 Dec 2002
 NASA FLIGHT NUMBER 03-923

START OF FLIGHT LINE

END OF FLIGHT LINE

FLIGHT DATA

FLTL	TIME		LAT		LON		SOLAR		TIME		LAT		LON		SOLAR		SCAN	HEAD	ALT
	HH:MM:SS		DEG		DEG		ZEN	AZIM	HH:MM:SS		DEG		DEG		ZEN	AZIM	LINES	DEG	M (MSL)
1	18:19:20		30.949		-100.060		54.1	175.8	18:46:06		32.942		-102.544		56.0	180.5	9999	310.7	19247
2	18:46:06		32.943		-102.544		56.0	180.5	19:12:53		34.904		-105.168		58.1	184.9	9999	309.8	19777
3	19:12:53		34.905		-105.169		58.1	184.9	19:39:40		36.925		-107.783		60.5	189.1	9999	310.9	19818
4	19:39:40		36.925		-107.784		60.5	189.1	19:50:54		37.786		-108.901		61.6	190.8	4198	313.1	19824
5	19:51:15		37.809		-108.940		61.7	190.8	20:03:03		38.346		-110.412		62.4	192.3	4404	297.2	19830
6	20:04:17		38.406		-110.559		62.5	192.4	20:07:39		38.406		-111.019		62.6	192.8	1259	273.0	19844
7	20:09:07		38.353		-111.202		62.6	193.0	20:35:53		36.454		-114.117		61.5	197.1	9999	231.1	19953
8	20:35:53		36.453		-114.117		61.5	197.1	20:48:47		35.538		-115.432		61.1	199.2	4812	231.8	20024

NUMBER OF FILES FOR THIS FLIGHT = 8
 TOTAL NUMBER OF SCAN LINES = 54669
 DATE THESE FILES WERE PROCESSED = 29-Jan-2003
 DATE THIS LIST WAS CREATED = Thu Jan 30 11:30:20 PST 2003
 GRANULE VERSION = 1

CAMERA FLIGHT LINE DATA
FLIGHT NO. 03-9023 / 03-923

Accession # 05721

Sensor # 031

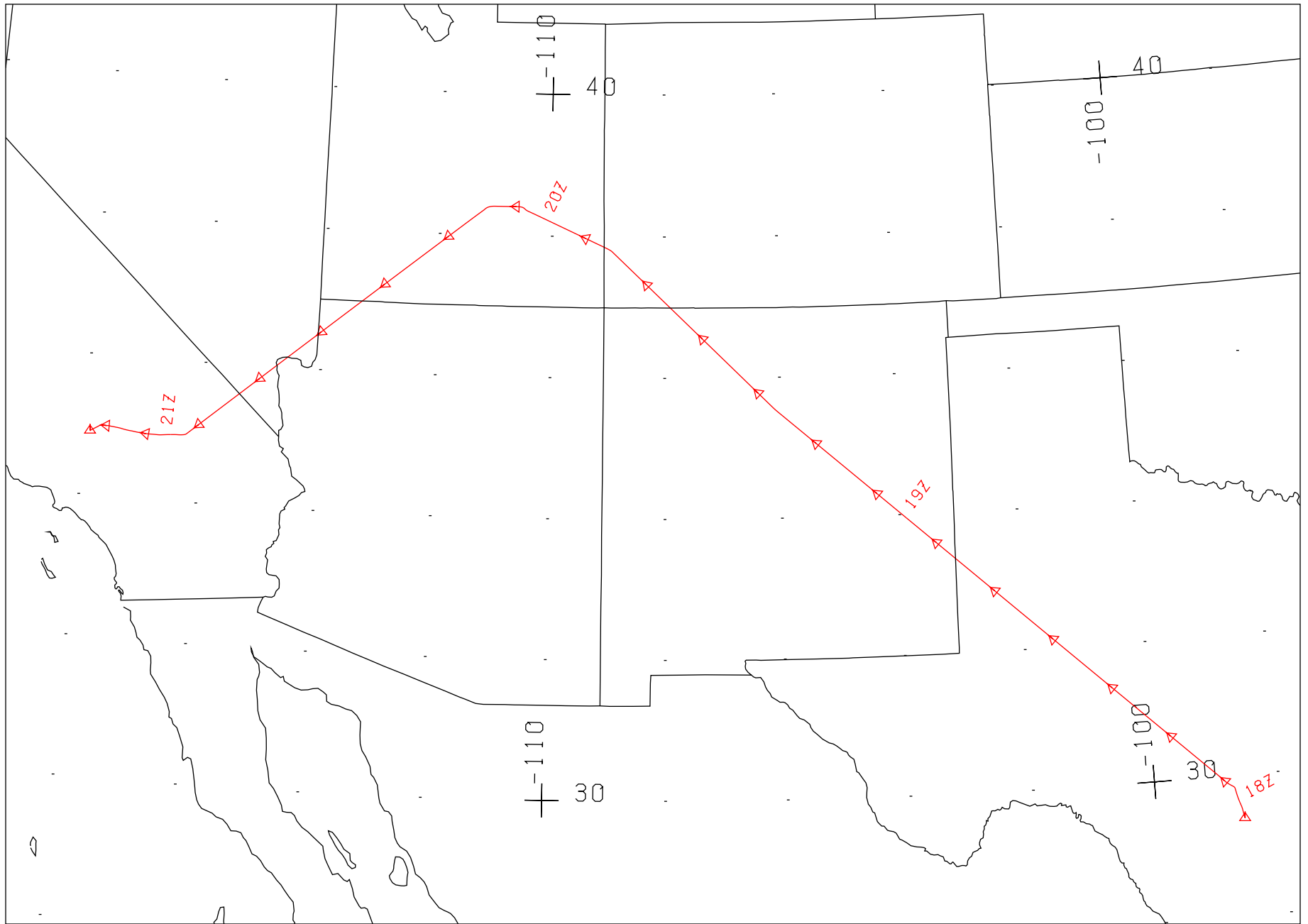
Check Points	Frame Numbers	Time (GMT-hr, min, sec)		Altitude, MSL feet/meters	Cloud Cover/Remarks
		START	END		
A - B	1584-1587	20:05:00	20:07:45	64800/19760	10-70% cumulus and cirrus, frames 1584-1586

CAMERA FLIGHT LINE DATA
FLIGHT NO. 03-9023 / 03-923

Accession # 05722

Sensor # 026

Check Points	Frame Numbers	Time (GMT-hr, min, sec)		Altitude, MSL feet/meters	Cloud Cover/Remarks
		START	END		
A - B	6511-6518	20:04:32	20:07:27	65100/19850	10-70% cumulus and cirrus

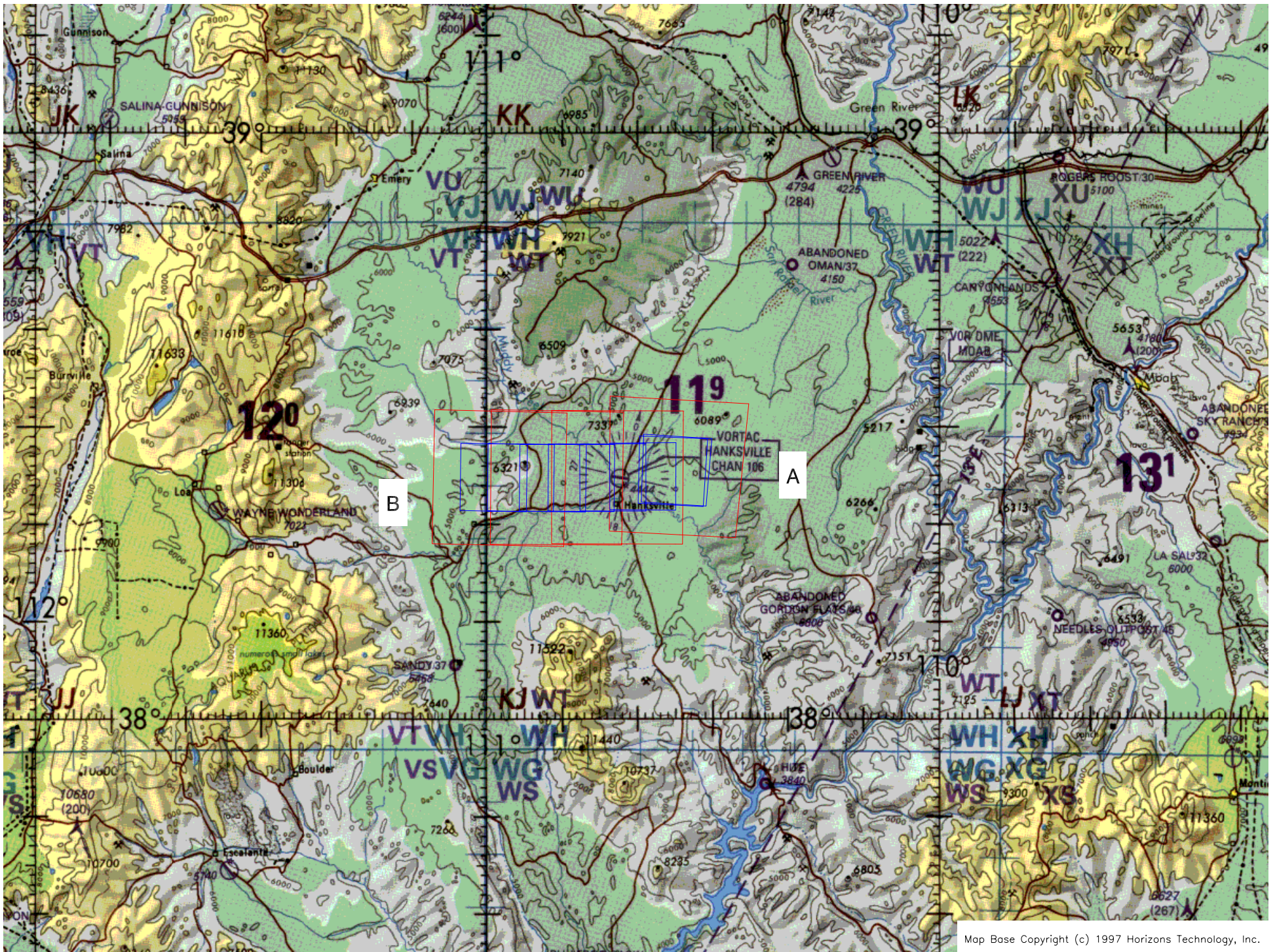


FLIGHT 03-9023 / 03-923

12 DECEMBER 2002

A/C 809

MAS / RC-10 / VIS / MVIS



Map Base Copyright (c) 1997 Horizons Technology, Inc.