

FLIGHT SUMMARY REPORT

Flight Number: 00-119
Calendar/Julian Date: 11 June 2000 • 163
Sensor Package: Wild Heerbrugg RC-10
Airborne Visible Infrared Imaging
Spectrometer (AVIRIS)
Modis Airborne Simulator (MAS)
Airborne Multi-angle Imaging
SpectroRadiometer (AirMISR)
Area(s) Covered: Lunar Lake/Railroad Valley/Las Vegas,
Nevada

Investigator(s): Conel, Bruegge, and Chrien, JPL

Aircraft #: 806

SENSOR DATA

Accession #:	05503	----	----	----
Sensor ID #:	034	099	108	120
Sensor Type:	RC-10	AVIRIS	MAS50	AirMISR
Focal Length:	12" 304.66 mm	----	----	----
Film Type:	Aerochrome IR SO-134	----	----	----
Filtration:	Wratten 12	----	----	----
Spectral Band:	510-900nm	-----	-----	----
f Stop:	11	----	----	----
Shutter Speed:	1/350	----	----	----
# of Frames:	80	----	----	----
% Overlap:	60	----	----	----
Quality:	Good			
Remarks:				

CAMERA FLIGHT LINE DATA
FLIGHT NO. 00-119

Accession # 05503

Sensor # 034

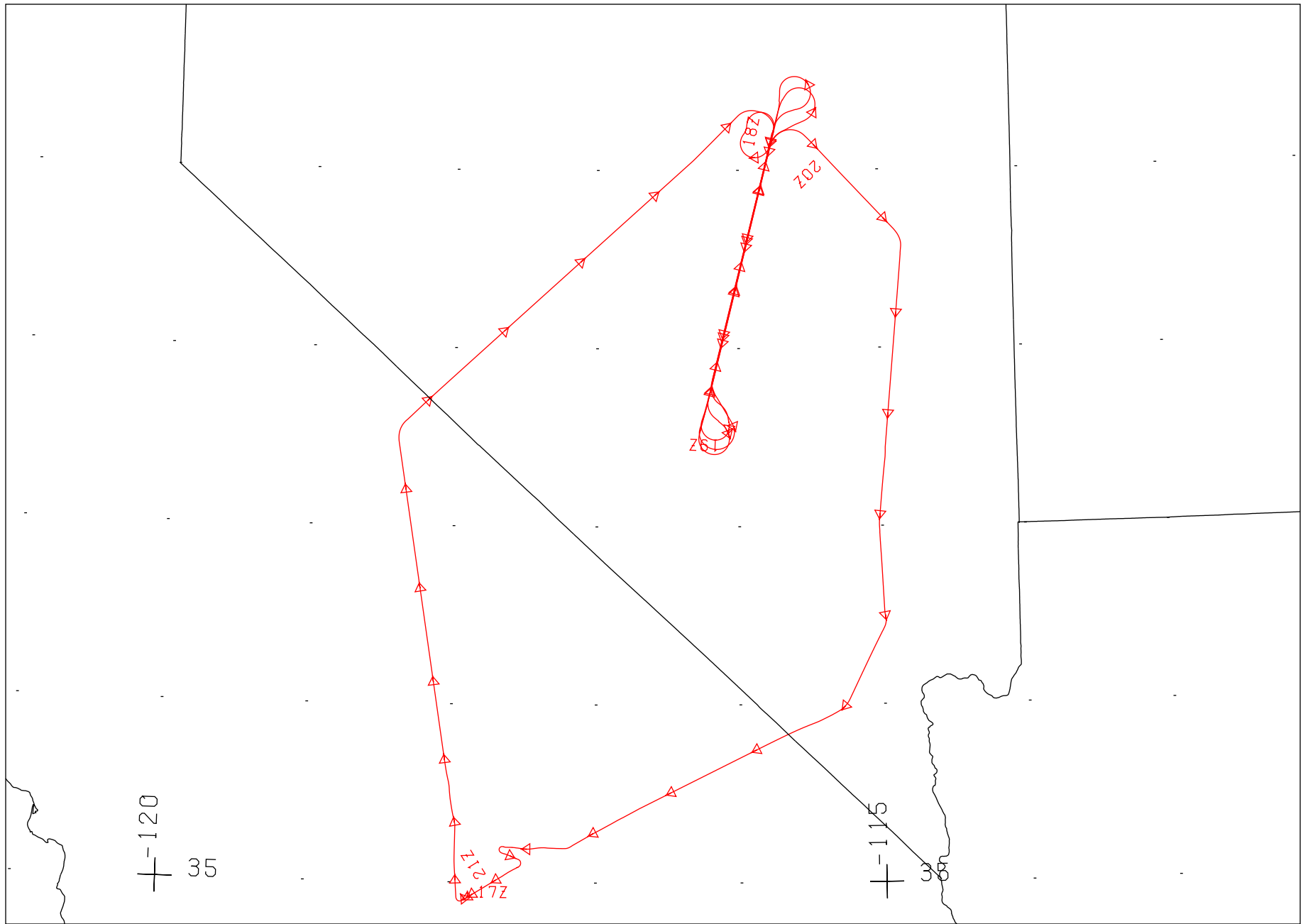
Check Points	Frame Numbers	Time (UTC-hr, min, sec)		Altitude, MSL feet/meters	Cloud Cover/Remarks
		START	END		
A - B	2257-2268	18:07:42	18:12:50	67400/20550	Clear
B - A	2269-2280	18:27:22	18:32:07	68000/20730	Clear
A - B	2281-2292	18:48:22	18:53:30	68800/20980	Clear
B - A	2293-2304	19:07:24	19:12:32	68800/20980	Clear
A - B	2305-2316	19:27:38	19:32:46	69000/21040	Clear
B - A	2317-2328	19:47:24	19:52:09	69400/21160	Clear
C - D	2329-2336	20:25:24	20:28:40	70000/21340	Clear; frame 2336 exposed during download

NOTE: Data block overexposed, time taken from pilot's green card

MODIS AIRBORNE SIMULATOR (MAS) FLIGHT LINE INFORMATION FOR 11-JUN-2000 FLIGHT 00-119

START OF FLIGHT LINE						END OF FLIGHT LINE						
LINE	TIME HH:MM:SS	LAT DEG	LON DEG	SOLAR		START HEADING	TIME HH:MM:SS	LAT DEG	LON DEG	SOLAR		SCAN LINES
				ZEN	AZIM					ZEN	AZIM	
1	17:33:39	37.603	-118.314	32.9	105.8	45.19	17:42:59	38.341	-117.314	30.7	110.3	3483
2	17:43:00	38.342	-117.312	30.6	110.3	47.41	17:52:17	39.044	-116.322	28.5	115.3	3469
3	17:52:35	39.066	-116.292	28.5	115.5	46.22	17:55:31	39.298	-115.994	27.8	117.2	1095
4	18:04:16	39.217	-115.734	26.4	120.2	196.56	18:17:04	37.816	-116.180	23.9	121.7	4774
5	18:22:19	37.625	-116.241	22.6	123.8	16.43	18:29:27	38.426	-115.985	21.8	128.9	2660
6	18:29:28	38.428	-115.985	21.8	129.0	15.18	18:36:34	39.230	-115.729	21.2	134.4	2647
7	18:42:26	39.350	-115.690	20.7	137.1	188.42	18:49:57	38.535	-115.947	19.2	139.3	2808
8	18:49:59	38.533	-115.948	19.2	139.3	193.42	18:57:28	37.720	-116.204	17.8	141.6	2796
9	19:02:30	37.518	-116.270	16.8	145.2	15.94	19:09:38	38.321	-116.016	16.7	152.5	2660
10	19:09:39	38.323	-116.015	16.7	152.5	14.14	19:16:46	39.132	-115.757	16.8	159.7	2653
11	19:22:54	39.330	-115.695	16.8	163.7	195.05	19:29:49	38.587	-115.936	15.8	167.9	2584
12	19:29:51	38.584	-115.937	15.7	167.9	193.18	19:36:46	37.836	-116.174	14.8	172.6	2579
13	19:37:54	37.718	-116.140	14.6	173.7	149.50	19:39:15	37.587	-116.044	14.4	175.2	505
14	19:42:51	37.577	-116.256	14.4	179.0	19.81	19:46:01	37.937	-116.135	14.7	182.4	1181
15	19:46:05	37.944	-116.132	14.8	182.5	14.31	19:56:33	39.123	-115.758	16.2	192.2	3902
16	19:59:01	39.175	-115.485	16.3	194.0	135.58	20:05:03	38.670	-114.886	16.3	201.2	2255
17	20:06:16	38.548	-114.830	16.4	202.1	187.48	20:15:59	37.446	-114.962	16.2	210.8	3623
18	20:16:36	37.376	-114.966	16.2	211.3	187.45	20:19:36	37.036	-115.010	16.2	214.0	1119
19	20:19:59	36.992	-115.012	16.2	214.4	176.56	20:24:04	36.527	-114.985	16.4	218.3	1523
20	20:24:59	36.426	-114.990	16.5	219.0	208.78	20:28:50	36.034	-115.231	16.5	221.8	1436

NUMBER OF FILES FOR THIS FLIGHT = 20
 TOTAL NUMBER OF SCAN LINES = 49752
 DATE THESE FILES WERE PROCESSED = 22-Aug-00
 DATE THIS LIST WAS CREATED = 23-Aug-00
 GRANULE VERSION = 9

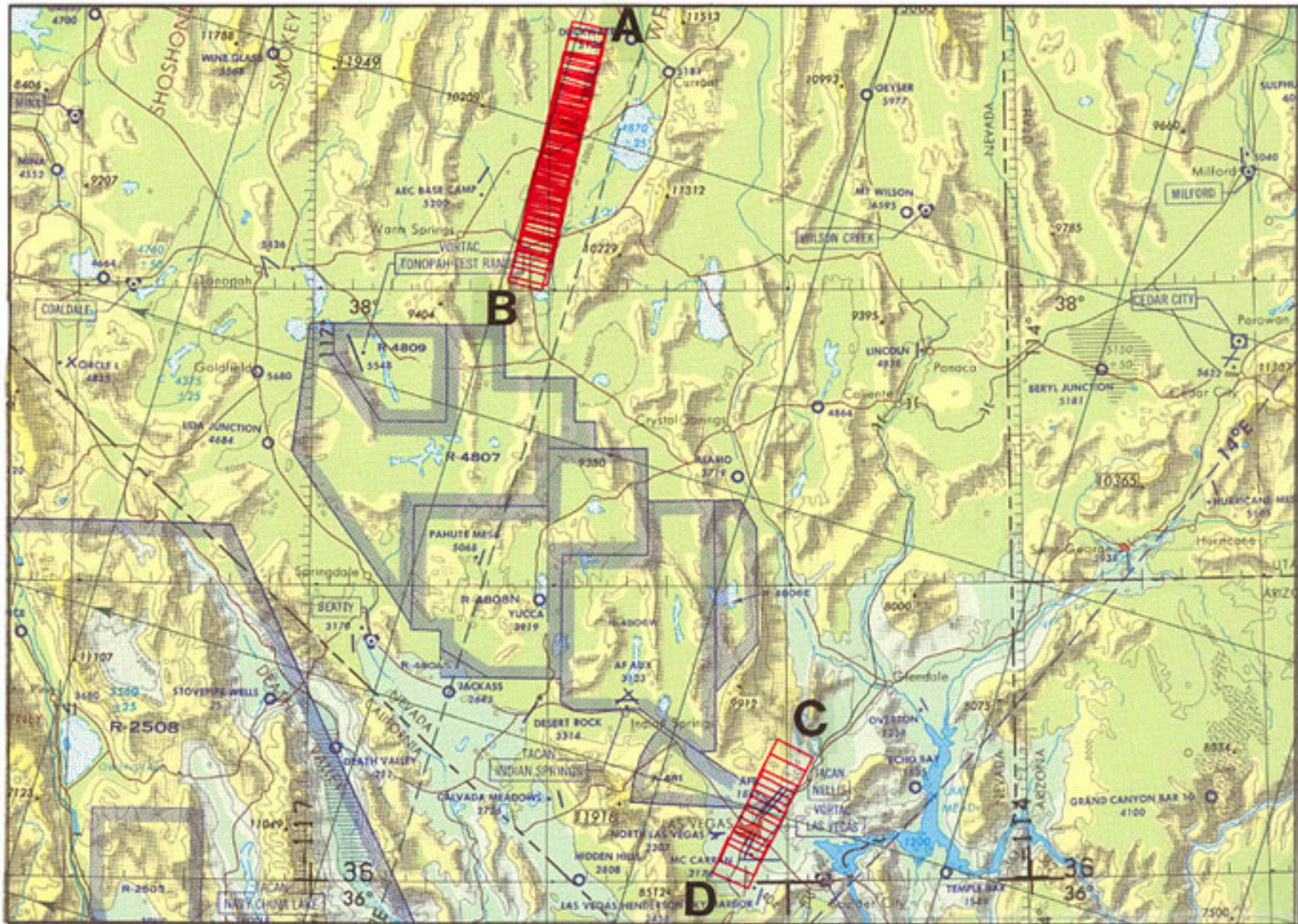


FLIGHT 00-119

11 JUNE 2000

A/C 806

RC-10 / AVIRIS / MAS50 / AIRMISR



FLIGHT 00-119

11 JUNE 2000

R/C 806

RC-10

JNC 43