

FLIGHT SUMMARY REPORT

Flight Number: 00-074
Calendar/Julian Date: 29 March 2000 • 089
Sensor Package: Dual Wild Heerbrugg RC-10
Airborne Visible/Infrared
Imaging Spectrometer (AVIRIS)

Area(s) Covered: Rogers Lake, CA

Investigator(s): Green, JPL

Aircraft #: 809

SENSOR DATA

Accession #:	05453	05454	----
Sensor ID #:	076	035	099
Sensor Type:	RC-10	RC-10	AVIRIS
Focal Length:	12" 304.89 mm	6" 153.46 mm	----
Film Type:	Aerochrome IR SO-134	Aerochrome MS EK 2448	----
Filtration:	Wratten 12	HF3 w/2.2 AV	----
Spectral Band:	510-900nm	420-700 nm	----
f Stop:	11	8	----
Shutter Speed:	1/300	1/275	----
# of Frames:	32	21	----
% Overlap:	60	60	----
Quality:	Excellent	Excellent	

Remarks:

CAMERA FLIGHT LINE DATA
FLIGHT NO. 00-074

Accession # 05453

Sensor # 076

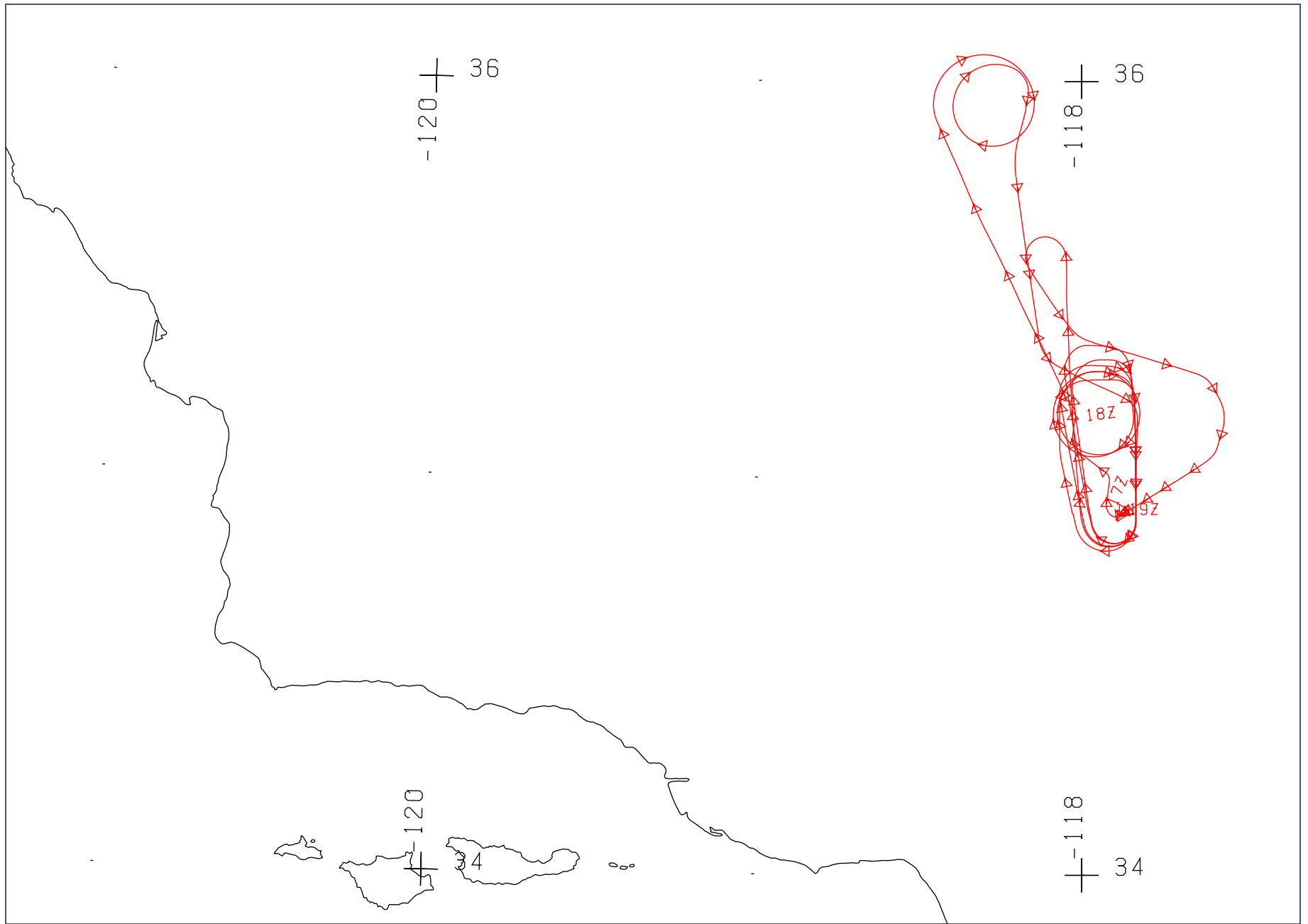
Check Points	Frame Numbers	Time (UTC-hr, min, sec)		Altitude, MSL feet/meters	Cloud Cover/Remarks
		START	END		
A - B	4679-4683	17:33:19	17:35:12	65100/19850	20-100% cirrus
A - B	4684-4689	17:43:04	17:45:24	65000/19820	50-100% cirrus, frame 4689 oblique
A - B	4690-4696	17:53:50	17:56:38	64900/19790	90-100% cirrus; frame 4696 oblique
A - B	4697-4703	18:03:29	18:05:54	64500/19660	80-100% cirrus, frame 4703 oblique processing residue, frame 4703
A - B	4704-4710	18:25:27	18:27:50	64700/19730	50-100% cirrus

CAMERA FLIGHT LINE DATA
FLIGHT NO. 00-074

Accession # 05454

Sensor # 035

Check Points	Frame Numbers	Time (UTC-hr, min, sec)		Altitude, MSL feet/meters	Cloud Cover/Remarks
		START	END		
A - B	0934-0937	17:33:21	17:35:43	65200/19880	30-100% cirrus, frame 0937 oblique
A - B	0938-0942	17:43:02	17:45:27	65000/19820	60-100% cirrus, frame 0942 oblique
A - B	0943-0946	17:53:53	17:56:40	64900/19790	80-100% cirrus; frame 0946 oblique
A - B	0947-0950	18:03:37	18:06:31	64500/19660	80-100% cirrus, frame 0950 oblique
A - B	0951-0954	18:25:34	18:27:58	64800/19760	70-100% cirrus, frame 0954 oblique

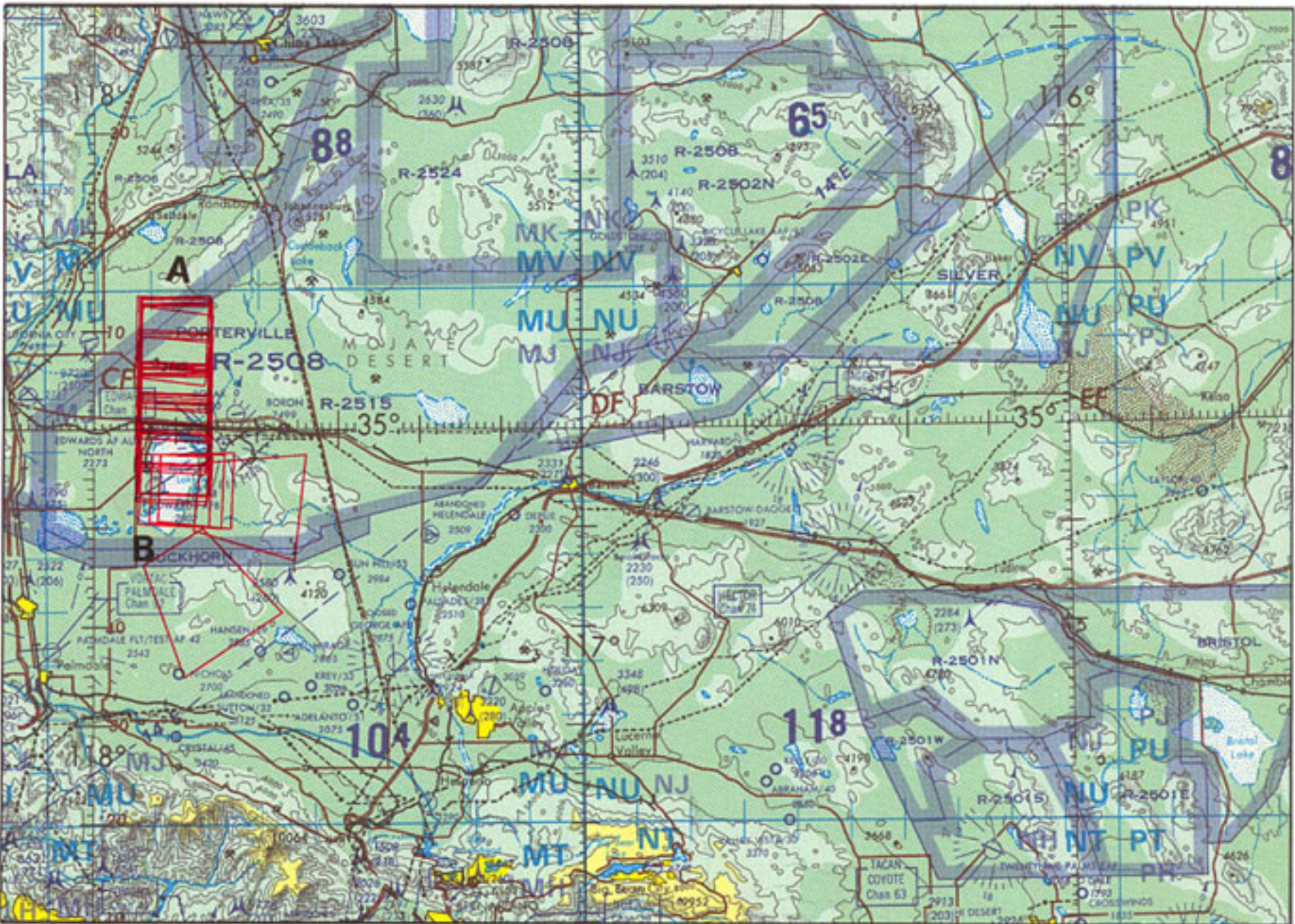


FLIGHT 00-074

29 MARCH 2000

A/C 806

AVIRIS / RC-10



FLIGHT 00-074

29 MARCH 2000

A/C 806

RC-10

ONC G-18